



Timelines

Volume 15, Issue 3

August 2018

www.coffeymuseum.org

Inside this Issue:

Genealogy Presentations	2
Upcoming Annual Events	2
Violin Dragoness	3
Plaza Theatre	4-5
Lifetime Members	6
Membership & Brick Forms	7

Annual Meeting is
Monday, September
24 at 6 p.m.!

Board of Directors:

Jeri Page,
President, LeRoy
Ida Wilson,
Vice President, Lebo
Eileen Coker,
Secretary, At-Large Position
Kent Hoyt,
Treasurer, Burlington
Georgia Masten, Waverly
Wendy Phelan, Burlington
Johnnie Redding, Jr, Gridley

Museum Staff:

Museum Director:
Shirley Gorge
Administrative Assistant:
Erin Burdick
Curator:
Catherine Goodwin

Annual Meeting Presentation:

Coffey County Historical Society in Burlington will host its annual meeting on Monday, September 24 at 6:00 p.m. at the Coffey County Historical Museum, 1101 Neosho Street, Burlington, KS. The membership, along with the public, are invited to attend.

Jennifer Freeman will be the presenter at this year's meeting. Jennifer's father was Bill Freeman who spent several years on the museum's Board of Directors.

She recently published a book this year about her father called Heart of a Champion: The Life and Legacy of Coach Bill



Heart of a Champion
The Life and Legacy of Coach Bill Freeman
Jennifer Freeman with Tina Wendling
Foreword by Lynn Dickey

Freeman. The book chronicles the life and career of Bill Freeman who is one of the winningest high school football coaches in Kansas history. It also discusses his battle with Alzheimer. For more information about the book and Jennifer, visit the website at www.coachbillfreemanheartofachampion.com.

Light refreshments will be served during the meeting.

Results of the 2018 Coffey County Historical Society Elections will also be announced during the meeting. Ballots are included in this issue of the newsletter. Only current Coffey County Historical Society members are eligible to vote in the election.

The LeRoy and the Lebo positions are up for election. Ida Wilson, Lebo position, and Jeri Page, LeRoy position, are both running for reelection. The position on the Board of Directors is a volunteer position with no compensation. Requirements of Board of Directors:

- ◆ Must be a member

of the Coffey County Historical Society. (Membership requires annual dues of \$5 per person. More information about memberships can be found on page 5 of this newsletter.

- ◆ Must be from the area which you would be representing. (For the 2018, you must have a LeRoy address to run for the LeRoy position or you must have a Lebo address to run for the Lebo position.)
- ◆ Attend the monthly meetings. The Board of Directors meet the second Thursday at noon every month. (Lunch is not provided, but members can bring their lunch to the meeting if they wish.)
- ◆ Having an email address and computer access is not a requirement but preferred in order to send out board packets electronically to save money on paper and postage.

Genealogy

Genealogist, Dottie Stuart, will be giving two different presentations about genealogy at the museum in the fall.

The first presentation, "Genealogy and the Internet," will be held on Saturday, August 25th at 4 p.m. The internet can be a great resource for genealogy research but it can also be frustrating.

Genealogist, Dottie Stuart, will explain the uses of the internet in genealogy research in her presentation "Genealogy and the Internet." She will supply

information on both free and cost sites for genealogy along with a list of the websites.

The second presentation, "Genealogy Brick Walls," will be on Saturday, October 20th at 4 p.m. Genealogy researchers often come to a brick wall in their research preventing them from moving forward in their research. It can be difficult to figure out where else to look for more information. In this class, Dottie will share some ideas on how to get past those brick walls.

Dottie Stuart has over ten years of

experience in genealogy research. She will be at the Coffey County Museum on Saturday, August 25th and Saturday, October 20th before the presentations from 1 p.m. to 4 p.m. to assist anyone with genealogy research. It is strongly encouraged that anyone wanting to take advantage of Dottie's assistance should be at the museum when it opens at 1 p.m. or shortly after to allow enough time to assist with the genealogy research before the presentation.



Far Left: Dottie Stuart shows a crowd the binder she uses to organize her genealogy research. Stuart gave a presentation, "Organizing Your Genealogy," on June 23. She spoke about using binders, laptops, thumb drives, and removable hard drives to keep genealogical documents organized.

Left: The museum received a 1st place blue ribbon in the Open Class Booth Display Division at the Coffey County Fair on July 25.

Upcoming Annual Events

The annual Kansas Day event has grown so large, the museum has decided to break it into two separate events.

The Annual Museum Gala will be held on the last weekend of March every year. In 2019, the event will be held on Saturday, March 30th. One of the activities during the event will be the silent and live auctions. More details and times will be announced later.

Pioneer Days is back! This event will be held on the last Saturday of September every year. Children will have the opportunity to participate in free activities during this event. Activities include butter churning, rope making, candle dipping, thaumatrope, and so much more. Event details and times will be announced at a later date.

Both of these annual events are posted on the museum's Facebook

page and will be updated at www.facebook.com/coffeeymuseum.



Museum Hosted Violin Dragoness

The Coffey County Historical Museum in Burlington hosted Violin Dragoness, a musical performer, on Monday, July 16, 2018, at the Coffey County Historical Museum. The Coffey County Council for the Arts (CCCA) sponsored the event and collected admission. Admission prices went to the CCCA.

Violin Dragoness is a music project by Lydia Gentry, a classically trained violinist tuned to a different amplitude- rock music featuring vocals, electric violin, and live looping, based in the area of Cape Girardeau, Missouri.

Many have described Gentry's style and voice as a mix of Florence Welch, U2, Muse, Rush, The Killers, Lindsey Stirling, Janis Joplin, as well as being inspired by the sounds of psychedelic and progressive rock, indie alternative, and Americana. Gentry's musical weapons of choice are her Viper electric violin by Wood Violins and her Boss RC-30 live looping pedal.

Lydia is a frequent performer in

Downtown Cape Girardeau and can be seen quite often throughout the year, whether at coffee shops, farmer's markets, or on the streets themselves. She has recently released singles, "Subdivisions" and "Limelight", both originally performed by Rush, and just completed her debut EP, "Exit 99", a mix of original and cover songs, which released in April 2018.

Gentry can provide acoustic or electric violin for your musical concept, idea, or perform for your event, house concert, or business. To contact Lydia or to learn more about Violin Dragoness, visit her website at www.violindragoness.com.

CCCA also sponsored Violin Dragoness to give a presentation for the children at the Burlington Branch of the Coffey County Library before the performance at the museum. She demonstrated to the children how she makes loops to create songs.

CCCA is a nonprofit arts organization, working to enhance

the quality of life in this community by promoting an awareness of the many kinds of arts. For more information about the CCCA, contact Pam Scott, President, at (620) 364-8214 or visit their Facebook page at www.facebook.com/CoffeyCountyCouncilForTheArts.

Bottom: Lydia Gentry, Violin Dragoness, performs her version of Blue Oyster Cult's "Don't Fear the Reaper" for the crowd on the gazebo. Other songs she performed at the museum included some of her original pieces and pieces by Coldplay, U2, and Imagine Dragons. Below: Gentry answers question from the crowd.



Plaza Theatre

A. J. Simmons (Lamar, MO) and Warren L Weber (St. John, KS) purchased the unoccupied Lamborn building, located at 404 Neosho Street in Burlington, in January 1940 for a theatre. The building had once housed a grocery store, buggy repository, bowling alley and pool hall at different times in its history.

Simmons and Weber had other theatres in St. John, Howard, Elmwood, and Stafford in Kansas and Greenfield, Appleton City, and Lamar in Missouri at the time they started the Plaza Theatre in Burlington.

After they purchased the building, they added a 20 foot brick addition on the north side of the building (back to the alley). The theatre had a seating capacity of 400. The Plaza Theatre was opened on April 24, 1940, with a showing of "Road to Singapore." The admission was 10 cents and 25 cents.

On May 31, 1941, a heavy rainfall hit Burlington causing flooding. A local weather observer reported a

total rainfall of 12.59 inches in a three day span which was two inches greater than any previous rain record in Kansas until 1951.

The Plaza theatre suffered the heaviest loss. The roof was badly damaged and the center of the east wall collapsed causing the floor to cave in. No one was in the building at the time. The Plaza manager had dismissed the usual Saturday afternoon matinee when the Rock Creek waters began to enter the theater.

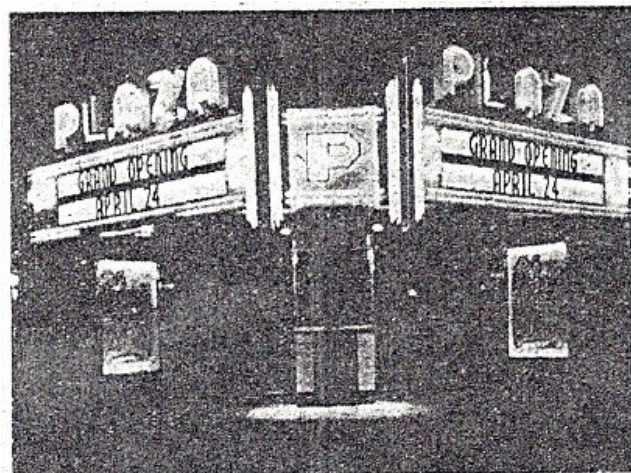
The other half of the building was also owned by Simmons & Weber and was occupied by Roberts Billiard hall. The wall between the theater and the billiard hall was leaning precariously and the flooring in the billiard hall was badly damaged.

The rebuilding of the Plaza was immediately started

with architect Al Hauetter. Warren Weber purchased his partners, A. J. Simmons' interest in the Plaza theatre in January of 1942 while the rebuilding was taking place.

Construction was finished and the new Plaza held its grand opening on March 26, 1942, with the showing of "Shut My Big Mouth" and admission of 10 cents and 25 cents.

The new Plaza was larger than the previous Plaza due to it being extended to the other part of the



Burlington's new Plaza, which will open Wednesday afternoon at 1:30 with "Road to Singapore" and which will have five continuous shows on the opening day.



Top Right: Clipping from the newspaper from the grand opening of the Plaza Theatre from 1940.

Above Left: Entrance to the Music Box when Jill Warren owned the building. Warren owned the building from 2000 to 2003.

Above Right: The Music Box Band. Back row: Jody Jackson, Rick McClintic, and Jill Warren. Front row: Russell Wolf, Dave Wooge, and Andrew Pittsenbarger.

Plaza Theatre (cont.)

building that was occupied by the billiard hall making it 50 feet wide and 110 feet long. It had a steel frame with a concrete foundation and walls with piers underneath and automatic pumps in the basement to prevent another great loss to a flood. The Plaza had a seating capacity of 536. The new building added a cry room for babies and twenty-four “love seats” were added throughout the center attracting the teenagers. The screen was 18.6’x13.6’.

Later, the Dickinson Theatre purchased the building for a movie theatre and then eventually sold it to the B & B Movie Company. B & B Movie Company shut its doors without warning when they sold the building to Stan Wright, Cheri Wright, and Charlene Daniels on October 11, 1989. Last movies shown in the theatre were “Field of Dreams” and “Lethal Weapon 2”

Wrights and Daniels remodeled the building to an opry house. The Flint Hills Opry opened on December 9, 1989, with guests Lisa Sterling (Iola), Harold Settles (Emporia), Martin & Hardy (Leroy),

and The Flint Hills Opry Band. Shows were held every Saturday night.

The Flint Hills Opry eventually closed and then the building housed the Burlington Jamboree.

Lisa “Jill” Pittsenbarger, better known by her stage name Jill Warren, purchased the building in 2000 and opened The Music Box. Jill first sang on the stage in 1991 when it was The Flint Hills Opry. The grand opening of the Music Box was held on March 4, 2000. Shows were held every Saturday night.

Dave Wooge later took over the building and renamed it the DW Music Box. The first show was held on December 20, 2003. Shows were held on Saturday nights with entertainment from country to 50’s rock and some comedy. The DW Music Box struggled to stay open due to poor attendance combined with continuing operating costs. It was announced on the marquee on November 20, 2004 that the business would be closing on

December 20, 2004. After discussion with the Coffey County Strategic Planning Committee, Wooge agreed to try a few ideas on how to increase attendance for six months. After trying again and with attendance still decreasing, the DW Music Box closed with the final show on Saturday, June 25, 2005. Wooge tried selling the building. He later reopened the building on July 1, 2006, and changed the name to the Burlington Opry. The business later closed.

George Oliver, Canada, later purchased the building and started to remodel the building. Oliver deeded the building in May this year to Plaza Theatre, LLC, a limited liability company formed by Pam Scott. Scott serves as the president of the Coffey County Council for the Arts. She is in the process of restoring the building. For updates and more information about the Plaza Theatre, LLC, visit them on the web at www.plazatheatrellc.com. You can also leave your information to help with the restoration or volunteering to work.



Above: The current condition of the Plaza theatre building. A barricade had been set up in the front of the building in case tiles fall off and a board covers up a hole in the building when a car drove through it on December 2, 2014.

Lifetime Members

Ackerman, Gayla Lonene	Evans, Terry L.	Kniss, Clarence	Reisbig, Clara L.
Adkins, Joan	Ferrara, Melchoir A.	Kniss, Donna	Robbins, Carol A.
Allegre, Peter	Finkbiner, Patricia	Krebs, Tammy Hoover	Roth, V. Cameron
Allen, Dan	Finkbiner, Terry	Krigbaum, Marilyn	Salava, Dan
Allen, Linda K.	First National Bank of Kansas	Kunkel, Connie	Salava, Linda J.
Anliker, Tyler	Fitch, Duane	Kunkel, David	Salisbury, Florence Conrad
Atherly, Mary Lou DeLong	Freeman, Bill	Kunkel, Opal I.	Sanborn, Patty A
Atkin, John D. M.D.	Freeman, Calvin Dean	Lifecare Center of Burlington	Sauder, Ray
Atkin, Patricia	Freeman, Diane	Little, Charles F.	Schick, Donald L.
Bailey, Marvin	Freeman, Elva	Lowman, Nadine	Schick, Ruth
Banks, Peggy	Freeman, Jeff	Luke, Linda Sue	Schultz, Achsah Carter
Beaty, W. Jean	Freeman, Joan	Luke, Lola Mae	Sleezer, Johnnie R.
Bedwell, L.F.	Fulk, Doris L.	Luke, Robert Standley, Jr	Sleezer, Retha I.
Birk, Julia Mae	Garrett, Emily	Martindale, Paul	Smith, Darlene
Bohrer, Paul	Garrett, Lisa I.	Matney, Linda J.	Smith, Ivan
Brecheisen, Betty	Garrett, Millie	Mattox, Martha	Smith, Marjorie J.
Bruce, Nellie	Geery, Barbara	McAlister, M.A.	Smith, V. LaVerne
Bruce, Robert Lyle	George, Dennis	McAlister, V.S.	Spade, Sharon
Central National Bank	Graber, Kevin	McConnell, John	Spatz, Caroline B.
Citizens State Bank	Graber, Linda	McReynolds, Richard L.	Spatz, Robert J.
City of Burlington	Griffin, Lena	Meader, Craig	Spriggs, Judy
City of Lebo	Hatch, Bonnie	Meader, Peggy	Stine, Phyllis A.
Clapp, Grace (Sauder)	Hatch, Homer	Merry, Barbara	Stukey, Arthur
Clark, Joanna	Hayes, Edris Irwin	Merry, Gene	Stukey, Kent
Clark, Larry	Herr, Bob	Montgomery, Dean R	Sunseri, Carol
Cochran, Dorothy	Hess, Wayne	Morey, George	Trimble, Chuck
Cockrell, Gilan	Holderman, Jenifer	Muench, Cheryl	Trimble, Joyce
Coffey County Chamber of	Holderman, Rich	Muench, Rick	Trimble, Randy
Commerce & Visitors Center	Hood, Betty Jo	Neil, Eunice Johnson	Trostle, Jerilee
Coffey County Council for the	Hood, Herbert	Norris, David	Trostle, Kerry
Arts	Hoover's Thriftway	Norris, Kasu Stinson	TrustPoint Services
Coffey County Honda	Hoover, Carlita	O'Leary, Margaret R.	Ubert, Ann
Coffey County Hospital	Hoover, Lisa	O'Leary, Dennis S.	Ubert, Gary
Coffey County Land Title Co.	Hoover, Ned	Oliver, Connie	Vannocker, Rebecca Louise
Inc	Hoover, Ron	Oliver, Kenneth	Veteto, Mona
Coffey County Library	Hoyt, Kent	Park, William H.	Watson, Irene
Coldsmith, Don	Hoyt, Lori	Parnay, Arlene Carpenter	Wildman, Kay
Coldsmith, Edna	Hull, Kelly J.	Payne, Janet	Wilkinson, Al
Combes, Irene E.	Hull, Sheldon L.	Ponder, Mary Lou	Wilkinson, Opal
Combes, Kenneth L.	Irey, Diana L.	Ponder, Randy	Williams, James E., Jr.
Conrad, Mary E.	Irey, Ronald W.	Purvis, Lois Jean	Williams, Kathleen (Asper)
Cordell, Larry	Johnson, Cloyce E.	Raaf, Clarence	Williamson, Arthur W.
Cox, Juanita	Johnson, Diane S.	Raaf, Esther	Williamson, Bernice
Croll, Susan	Johnson, Jerry D.	Raaf, Fred A.	Williamson, Mitch
Curtiss, Jerilyn	Johnson, John E.	Raaf, Gary	Wilson, Ida M.
Curtiss, Larry M.	Johnson, Loren E.	Raaf, Harvey G.	Wilson, Warren D.
Danford, Charlene	Jones, Don	Raaf, James L.	Wolf Creek Nuclear Operating
DeLong, Roy G.	Jones, Carol	Raaf, JoAnn	Corporation
Dunlap, Dr. James	Jones, Fred S.	Raaf, Mark	Wolken, Deanna
Dunlap, Judith	Jones, Glenda	Raaf, Ralph	Woods, Chloe
Edelman, Albert L.	Jones, Paul M.	Raaf, Richard	Woods, Frank
Edelman, Victor	Kaufman, Helen Garn	Raynesford, Carolyn C.	Worrell, Dallas G.
Epting, Gary	Keas, Sandy K.	Redding, Bud	Zscheile, Lila L.
Epting, Polly	Kennamore, Deborah	Redding, Carol	
Evans, Dean	Kennamore, William "Pete"	Reeves, Glen W.	
Evans, George	Klubek, Brenda Grace	Reeves, Karen K.	
Evans, Sue	Knapp, Bill	Reimer, Paul	

*new members are bolded

222 Total Lifetime Members

Membership Form

Name: _____

Address: _____

City: _____ State: _____ Zip: _____

Phone Number: (____) _____ Alt. Number: (____) _____

Email address: _____

Would you like your newsletter emailed to you? _____ Would you like to be a volunteer? _____

Name as you would like it to appear on membership: _____

- | | |
|--|--|
| Type of membership (please circle one):
<input type="checkbox"/> Individual (\$5.00 annual <u>per person</u>)
<input type="checkbox"/> Business (\$15.00 annual per business)
<input type="checkbox"/> Lifetime (\$100.00 one time fee <u>per person</u>) | *Please mail completed form and check or money order to:
Coffey County Museum
1101 Neosho Street
Burlington, KS 66839 |
|--|--|

If you have any questions or would like to know the status of your current membership, please call Erin at (620) 364-2653 or toll free at (888) 877-2653 or email erin@coffeymuseum.org.

Coffey County Historical Museum Gazebo Bricks

Purchase a personalized brick that surrounds the Gazebo for \$40 each.

Please Note: Bricks will only be engraved once there are ten bricks that need to be engraved. This may take weeks or years.

Name: _____

Address: _____

City: _____ State: _____ Zip Code: _____

Phone: _____ Email: _____

***Please make checks or money orders payable to: **Coffey County Historical Museum**

Each brick may have 2 lines of print with 13 spaces each.

**Coffey County Historical
Society & Museum**
 1101 Neosho Street
 Burlington, KS 66839
 620-364-2653
 1-888-877-2653
www.coffeymuseum.org
 email:
visit.us@coffeymuseum.org

Calendar of Events

August

9- Board Meeting @ Noon
24- Genealogy & Internet @ 4 p.m.
24-26- LeRoy Homecoming

September

3- Labor Day- Museum OPEN
13- Board Meeting @ Noon
24- Museum Annual Meeting @ 6 p.m.

October

8- Columbus Day- Museum OPEN
11- Board Meeting @ Noon
20- Genealogy Brick Walls @ 4 p.m.

November

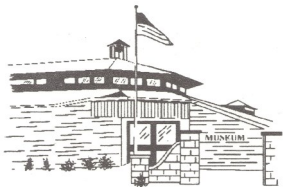
11- Veterans Day- Museum CLOSED
8- Board Meeting @ Noon
22-23- Thanksgiving- Museum CLOSED

December

7- Pearl Harbor Remembrance Day- Museum OPEN
13- Board Meeting @ Noon
24-25- Christmas- Museum CLOSED
31- New Year's Eve- Museum CLOSED

**bold items are important dates at the museum.*

Coffey County Historical
Society & Museum
1101 Neosho St.
Burlington, KS 66839



Take a walk through history!

We're on the web!
coffeymuseum.org



Visit us on Facebook!
www.facebook.com/coffeymuseum

VIEWING HOURS:

Summer Hours: (March to October)

Monday- Friday 10:00 a.m. to 4:00 p.m.*

Saturday & Sunday 1:00 p.m. to 4:00 p.m.*

*CLOSED Holiday Weekends except Memorial Day & Labor Day

Winter Hours: (November to March)

Monday- Friday 10:00 a.m. to 4:00 p.m.

CLOSED on Weekends and Federal Holidays