

# Timelines



Volume 11, Issue 3

November 2014

[www.coffeymuseum.org](http://www.coffeymuseum.org)

Inside this Issue:

New Displays	2
Spiritual Dimensions	3
Fall Festival	4
Kelley	4-9
Kansas Day	10
Church & School	11
Lifetime Members	12
Membership & Brick Forms	13

Reminder: The winter viewing hours have now taken effect at the museum. The museum will be closed on the weekends until mid- February.

## Annual Meeting: Election Results

The Coffey County Historical Society Annual Meeting was held at 7 p.m. on Monday, September 22 in the Pioneer Gallery at the museum. The results of the 2014 Election were announced. The winner of the Gridley Position on the Board of Directors was Juanette Birk. Sandra Reedy was elected to the Waverly position on the Board of Directors. Birk and Reedy took office at the October regular

monthly meeting. The addition to the By-Laws about the electronic mail and phone conference was also passed and went into effect that night.

Birk and Reedy were replacing Retha Sleezer and Carol Sunseri on the board whose terms had expired. Museum Director, Shirley Gorge-Logan, presented Sleezer and Sunseri with certificates of appreciation for their dedication to the Board of Directors.

Shirley gave a presentation titled "Museum101." During the presentation she spoke about environmental factors and the way they affect the artifacts.

The 2015 election for the LeRoy and Lebo positions will be by mail-in ballots in September of 2015. The next Annual Meeting will be held on September 26, 2016.

### Board of Directors:

Victor Edelman,  
President, Lebo

Tom Allen,  
Vice President, Burlington

Eileen Coker,  
Secretary, At-Large Position

Kent Hoyt,  
Treasurer, Burlington

Jeri Page, LeRoy

Juanette Birk, Gridley

Sandra Reedy, Waverly



### Museum Staff:

Museum Director:  
Shirley Gorge-Logan

Administrative Assistant:  
Erin Burdick

Registrar:  
Michelle Morris



## New Displays

The museum staff and a few volunteers have been busy rearranging displays in the Flint Hills Gallery and the Cochran Gallery. The kitchen and the 1900's sitting room in the Cochran Gallery were rearranged to make room for the Williamson Replica Home. The 1940's-1950's living room in the Flint Hills Gallery was moved to the Cochran Gallery where the Williamson Home was originally on display.

The Children's room was moved to where the living room display was in

the Flint Hills Gallery allowing for more room for the children. The old children's room is still a work in progress but the plan is to have a display with interesting facts about Coffey County in the display area. Be sure to stop by and view the changes!



Top Right: Elders Lott and Matheson volunteered their time to help move items in the Cochran Gallery. Shown here, the elders moved a cabinet in the early living room in the Cochran Gallery. They rearranged the Kitchen and the early living room to make room for the Williamson house to be displayed in the living room.

Left: Shirley paints stars in the new Children's display in the Flint Hills Gallery. Everyone is encouraged to bring their children and check out the new Children's Room which has several new fun items!

Below: The 1940's-50's Living Room is starting to take shape in its new home in the Cochran Gallery.



## Spiritual Dimensions: Presentation with Readings by Traci Bray, Psychic Medium

Traci Bray, Psychic Medium, was back again this year at the museum to give a presentation with random readings for a fundraiser to help with restorations of the Bethel Church and the Rural Dale Schoolhouse located on the museum's grounds. A total of 97 people purchased tickets for the event compared to the 51 people who attended last year. The fundraiser made a total profit of \$1,412.93! A huge thank you to all the visitors who came that night and to Traci for coming back to share about her work.

Traci spoke to the large crowd about her background and what led her into giving readings. Traci holds a Bachelor's degree in Family Services and a Master's in Law Enforcement and Justice Administration. She is a Level #5 (the highest level) Certified Research Medium with the Windbridge Institute for Applied Research in Human Potential and a Certified Medium with the Forever Family Foundation. She has

also served as a Certified Research Medium with the VERITAS program.

If you would like more information about Traci, please visit her website at [www.tracibray.com](http://www.tracibray.com).

Right: Traci Bray gives a random reading to a woman in the audience.

Below : Traci Bray, Psychic Medium, tells a crowd of 97 people her experiences as a psychic medium.

Bottom: A packed parking lot the night of the event. Some even had to park along the side of the road.



## Fall Festival



Top Left: Museum Director, Shirley, helps a little boy create a yarn doll during the Burlington's Fall Festival that was held on October 4 in Kelley Park. Top Right: Carol Sunseri supervises the child who is creating a rope. Not pictured is her husband, Matt Sunseri, who was at the other end of the rope using the rope making wrench tool. The museum provided two activities to go along with the other activities that were going on during the day.

## Kelley

### The Harrison Kelley Family

Harrison Kelley arrived in Ottumwa during 1856. He joined the 5th KS Cavalry in 1861 and rose to the rank of Captain of Company B. He was very involved in politics. He was in the State Legislature, served one term as a Senator, and filled a position in Congress. He was for the suffrage



Above: General Harrison Kelley. A different portrait of Kelley can be found hanging in the Kelley Community Hall building at Kelley Park.

movement and hosted several well know suffragists including Susan B. Anthony in his home.

Kelley's second wife, Caroline, was part of the group of four women from Ottumwa who voted in the 1868 Presidential Election and their votes counted (the 19th Amendment allowing women the right to vote was not ratified until 1920).

Harrison and Caroline had three children Harry E, Herma T, Artie, and Fannie. In about 1883, Harry E. Kelley built a three story brick house in Burlington where Kelley Hall now stands in Kelley Park. He married Kate Henderson on August 12, 1885. In February of 1887, Harry Kelley went down to Ft. Smith, Arkansas, to manage the office of Lane & Kent Real Estate & Loan, just opened down there. He would later buy his partners' interests and become a very successful business man in Ft. Smith.

Kate gave birth to a son, Leigh Kelley, in their home in Burlington on May 15, 1887. Harry moved Kate and Leigh to Ft. Smith during August of

1887. General Harrison Kelley with Caroline and their daughters moved into Harry Kelley's home in Burlington during 1887. General Harrison passed away in 1897 and his daughters later married and moved out of state. Caroline would spend the rest of her years visiting her children until her death on August 7, 1907, in Pueblo, Colorado, while visiting her daughter Artie (Kelley) Palmer

### Kelley Park Donated to the City

During the spring of 1906, Harry E. Kelley offered to give the city of Burlington the Kelley house and land for the use as a public library and park. In a letter, he listed his conditions as follows:

1. That a public library and reading room be maintained in the building free to all the inhabitants of Burlington, and public to all the inhabitants of Coffey county on such terms as the city of Burlington shall prescribe; the trees and grounds to be kept in good condition and used as a public park; the buildings to be

## Kelley (continued)

- maintained in as good condition as they now are, and to be kept insured in a sum not less than \$5,000.00.
2. The city shall cause to be built and maintained a stone or cement sidewalk, and a public highway from the corner of Third and Neosho streets, and from Fourth street to the property.
  3. All income arising from the use of said land to be applied only for the purchase of books for the use of said library. (This was later changed after Burlington Mayor Cowgill discussed it with Harry Kelley to say the income could be used towards maintaining the park.) All gravel hauled from said land shall be paid for at the rate of not less than 25¢ per cubic yard, and the proceeds to be used as the other income. (This was later changed before the deed was signed over to give the city the privilege of using the gravel to fix up the walks and drives in the park and as you approach the park.)
  4. That the city shall pay all taxes and assessments on said land before they become delinquent.
  5. That the failure of the city to perform the considerations aforesaid shall cause the property to revert to the grantor, or, in case of his death, to his heirs.
  6. That all gifts by any of the heirs of descendants of Harrison Kelley made to the library shall revert to the donors as provided in No. 5.
  7. Should it be deemed advisable by the city of Burlington to sell the property and invest the proceeds in a library building located elsewhere in the city, it may do so with my consent, or in case of my death, with the consent of the Kelley Trust Company, providing the price sold for is not less than \$15,000.
  8. If the city of Burlington wants to accept this on these terms and will do so by next week I will send up a deed to be delivered on the passage of an ordinance accepting these terms with a provision in it that in case the city at any time concludes to abandon this property for the purpose designated it

will return it to me in as good condition as received.

The city of Burlington held a special meeting the following night with all five of the councilmen and mayor present. After much discussion, a vote of four ayes and one no was casted on accepting the gift from Kelley. Councilmen Lane, Barber, Wingett, and Salisbury voted yes and Councilman Sweaney voted against. The 46 acres of 26, 21, 15 was deeded over from the Kelley Trust Company to the City of Burlington.

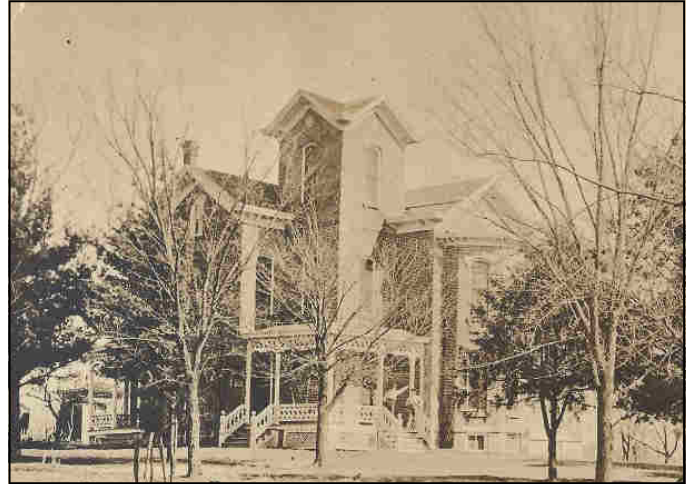
The ordinance that appeared in *The Burlington Republican* newspaper on April 7, 1906, accepting the gift is below.

### Ordinance No. 8r.

An ordinance accepting a gift from Harry E. Kelley of certain property for a city park and for use as a public library to be known as the Harrison Kelley Library.

Whereas Harry E. Kelley has offered to convey to the City of Burlington, Kansas for use as a public library and park what is known as The Harrison Kelley property south of the city, upon certain conditions contained in an offer submitted to the council of said city at a meeting especially called in due form of law to consider the same on April 4th, 1906, and which were by said city agreed to.

Sec. 1. Now therefore be it ordained by the mayor and council of The City of Burlington, that said offer be and the same is hereby accepted as made and said city hereby agrees to faithfully perform and carry out the several conditions and obligations imposed by said donor the terms of which are to be fully expressed in the deed of conveyance hereafter to be made by said Harry E. Kelley.



Above: The Kelley home built mid-1880's was donated to the City of Burlington in 1906.

Sec. 2. The city attorney is hereby instructed to attend to the procuring of such conveyance in such form as shall comply with the law and carry out the spirit of this gift and intent of the parties.

Sec. 3. This ordinance shall be in force form and after its publication in *The Burlington Republican*.

Passed the council and approved by the mayor this 6th day of April, 1906..

H. E. Cowgill, Mayor  
Attest. Della Hall, City Clerk.

After word got out about the gift, Kennedy and Sons' offered to donate \$100 towards a stone arch over gate that said "Kelley's." Other businessmen offered to donate a fountain for the park. J. I. Wolfe donated a band stand and seats in a circle around it that would sit 200-300 people.

The community thought it would be right to throw a celebration in the park. The Zu Zu Club planned the 4th of July and dedication ceremony for Kelley Park. Harry Kelley was in attendance and even gave a few speeches during the event. About 6,000 people attended the event that offered music entertainment, boat race, swimming race, tub race, pie eating contest, Gridley vs. Burlington

## Kelley (continued)

baseball game (Gridley won), clay pigeon shooting, fireworks, and much more.

### Kelley Military Academy

Colonel Clyde R. Terry met Major H. T. Salisbury and other Burlington men during World War I. Terry was for some time a chaplain and athletic director in the Miami Military School. Salisbury and the other Burlington men told Terry the advantages for a military school in Burlington.

Terry came to Burlington and held a meeting about having a military school here. He was interested in locating the school on the Manson property that was South of Kelley Park. This land could not be secured, but the Kelley house in the park was secured for the boys school. Terry decided to name the school "Kelley Military Academy" in compliment to Harry E. Kelley and General Harrison Kelley. Harry E. Kelley wished Terry success.

Kelley Military Academy opened on September 18, 1919, with the 3rd floor of the house used as the dormitory. Major A. L. Hitchens was the Commandant of Cadets, Major H. T. Salisbury was the Academy Surgeon, and Captain I. H. Eppinger was the Headmaster of the new school. The first year of enrollment was three students. The numbers grew to 22 students the following year and 32 students the final year.

A tragic accident happened at the school about noon on March 23, 1921. Terry was demonstrating an automatic revolver to the boys which he thought was unloaded. He was oiling the revolver when the gun went off and shot his wife, Elsa, who was sitting in the room, thru the heart. After all witnesses were examined, the jurors exonerated Terry from any intentional blame. Terry remarried on August 3, 1922, to Mary Hunter of Kansas City.

The growth in the number of students made it necessary for larger quarters. Terry feared with 75-100 boys, it would be impossible to use the park without interfering with its use by the city. Terry secured the possession of the Oswego college buildings and grounds in Oswego, Kansas. The Oswego campus was 10 acres and could accommodate from 75-100 boys. He moved the academy on September 1, 1922, and changed the name to "Kansas Military Academy."

The Kansas Military Academy caught on fire on March 3, 1924, with a loss of approximately \$50,000. The 65 students were able to escape the inferno that engulfed the entire building in flames within twenty minutes. The fire completely destroyed the dormitory and badly burned the administration building. One of the students was Abbott Crandall, son of Mr. and Mrs. Warren Crandall of Crandall, Coffey County, Kansas. He wired his parents and told them he lost practically all of his belongings. The school was then moved to Aledo, Illinois, creating the Illinois Military Academy. The school and Terry went bankrupt in 1931.



Above: Colonel Clyde R. Terry started the Kelley Military Academy in 1919.

board decided to move on without Terry and supported the school privately. They renamed the school "Roosevelt Military Academy."

Colonel Clyde Terry was killed on December 25, 1947, in Rock Island, Illinois, when a speeding taxi hit him while he was crossing the street.

### Coffey County Fair

The original site for the Coffey County Fair was located where present day Rock Creek Country Club sits today at the west end of Burlington. Harry E. Kelley signed a supplemental deed which gave the City of Burlington the authority to lease the land for a fair and similar enterprises allowing the 1915 fair to be moved to Kelley Park. The plan was for the Fair Association to lease Kelley Park for the 1915 Fair and if it was a success, then the association would sell the old fair grounds and improve the buildings at Kelley Park for the new fair grounds. If it was a failure, then they would keep the fair location at the old fair grounds. With moving the fair to Kelley Park, the horse races were removed from the regular fair line up and the admission from the fair was reduced to twenty-five cents for single tickets, twenty-five cents for child season pass, and fifty cents for adult season pass. The 34th annual Coffey County Fair was a four day fair and a first in Coffey County Fair history that it rained every day. The stockholders decided to try another year at Kelley Park. After two years of low attendance, the location was moved back to its original location adding a couple of the popular programs when it was held at the park.

In 1932, the county fair was moved back to Kelley Park for good after the city passed Ordinance No. 242 granting the Fair Association the right

## Kelley (continued)

to use Kelley Park for twenty years for the period of two weeks each year. The community and high school students donated their time, equipment, teams and trucks for moving the fair to the park. The old buildings at the original fair grounds were torn down and some of the materials from those buildings were used in the building of the new buildings at Kelley Park. An athletic field and a quarter mile race track were constructed. The athletic field was built for all sports but the main focus was baseball and football. The big grandstand at the old fair grounds was razed in two days. The lumber was used to rebuild the grandstand in the athletic field at Kelley Park. The seats in the old grandstand were used as bleacher seats in the athletic field.

The 51st Coffey County Fair was the first "free fair" for Coffey County. There were no admission to the free grounds (exhibits, carnival, etc...) except to the athletic field to see the races and the Jack Wizarde Novelty Circus. The charge to the Athletic Field during the fair was 25 cents and seating in the grandstand was an additional 25 cent charge.

The 1941 Coffey County Fair was the first fair that the exhibits were displayed in the new Kelley Community Building. In 1947, the Memorial Stadium was built in Kelley Park. The stadium was built of reinforced concrete with stone facing to match the Harry Kelley Community Hall Building. The stadium included a ticket office, locker rooms for two teams, and men's and women's

bathrooms. The contract for building the stadium also included a new race track. The race track was a half mile track and the baseball diamond and football field were placed inside the track.

The Coffey County Fair still holds the fair at Kelley Park. The 2014 Coffey County Fair was the 134th fair. The fair is also the longest consecutively running fair in the state of Kansas.

### Kelley Community Hall

The National Youth Administration (NYA) approved the project of building a community building for Burlington in 1939. The first phase of the project was to raze the old Kelley home. The years prior were full of extreme wet and



Above: Kelley Park during the 1951 flood. #1 on the picture is Memorial Stadium and #2 is the Kelley Community Hall Building. Also visible are some of the fair's livestock buildings just left of the race track. The entrance pillars for the park are in the foreground of the photograph.

## Kelley (continued)



Above: The Kelley House in 1939 before it was torn down because it had become unsafe. The Kelley Community Hall Building is located in the same location where the house was located.

dry and hot and cold spells causing the house to become unsafe from settling and cracking of the walls and the house was condemned. The materials in the Kelley home were salvaged and provided much of the supplies, such as lumber, needed in the construction of the new building. Any left over materials were sold and proceeds used in the park. The frame section of the large porch at the southeast corner of the Kelley House that was built for use as a dining area when the military academy used the home was moved and made to provide living quarters for the caretaker, John Enright, until the new building was completed. The NYA boys also razed the old grandstand that had also been condemned on the east side of the

Right: The plans for the new community building that appeared in the December 3, 1940, edition of The Daily Republican. A few changes were made in the plans from those shown. The kitchen was moved to the south end of the building and the restrooms were moved to the north end. The building size was also changed to an inside measurement of 33x80 feet, the plans show those measurements as the outside measurements.

race track and the materials were also used for the construction of the new community building. The NYA boys completed razing of the buildings in November of 1939.

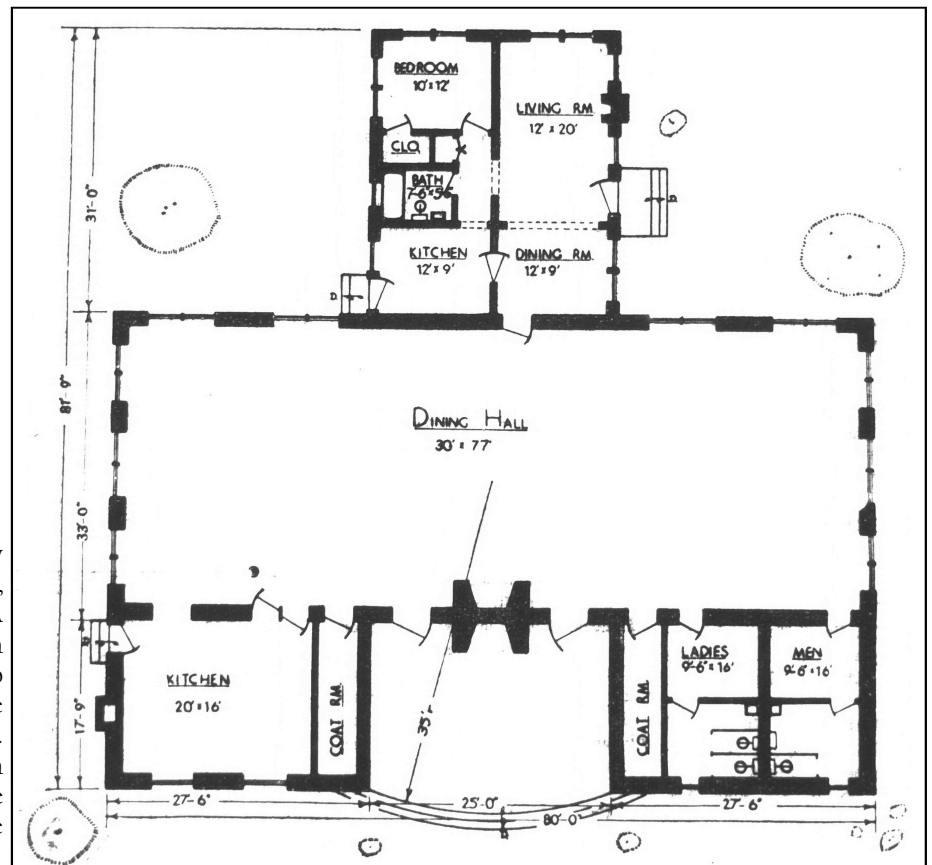
All of the stone was native stone quarried by the NYA boys.

After the park caretakers, Mr. and Mrs. John Enright, moved into the new apartment attached to the community building, the building they were using as a temporary home was

purchased by M. E. Henderson. The building was moved to Henderson's home on south sixth and added to the rear for additional bedrooms.

The new community building was dedicated on June 26, 1941, also the sixth anniversary of the National Youth Administration (NYA). NYA State Administrator, Anne Laughlin, presented the new building to Burlington City Attorney, Louis R. Hannen, in the absence of Mayor Frank Henning and President of City Council A. W. Scott.

In her speech, she said, "I want to congratulate the City councilmen of Burlington for their vision. Particularly, may I be permitted to say "Thank you" to Mr. John Redmond, editor of your paper, who came to my office and first suggested to us the dream for the structure that tonight is a reality. May I also congratulate your many citizens who have contributed to make this building possible and the supervisors who took unskilled labor and gave you a structure of beauty. But above all others I congratulate the





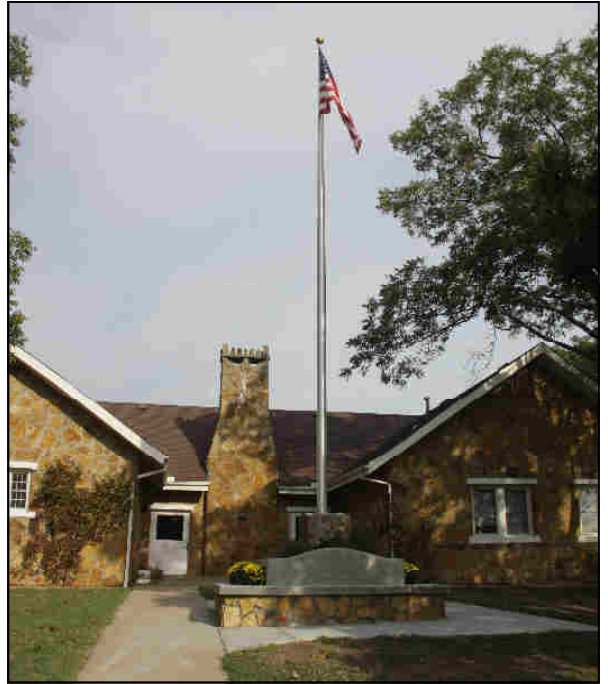
## Kelley (continued)

youth of Coffey County by whose labor this building was erected.” Harry E. Kelley’s son, Leigh Kelley also spoke at the ceremony. He told the community that his dad and he appreciated the building being named the Harry E. Kelley Community Hall. A dance was held afterwards in the building. Tickets were 40 cents for men and 10 cents for ladies with the proceeds going towards furnishing the new building.

In August of 1993, the Burlington Police Department moved from the basement of the Carnegie Library (where they have been located since January 1985) to the former caretaker’s apartments in Kelley Community Hall Building. The move was to be temporary until 1995 but they have

remained there to present day. Currently, they are building a new police department and storm shelter located on the corner of Alleghany and Third Street right across the street from Kelley Park.

The Kelley Community Hall Building is still used today for fair displays, reunions, and much more. For information on reserving the building for your activity, contact the City of Burlington at (620) 364-5334.



Above: The Burlington Rotary Club built a flagpole monument in 2012 just west of the Kelley Community Hall Building. They dedicated the flagpole to all the veterans of Coffey County and to the youth. A plaque on the monument lists Burlington Rotarians as well as other contributors and contractors who donated their time or materials for the project. (Photo courtesy of the Coffey County Republican.)

Left: The inside of the Kelley Hall Community Building in 1941.

Bottom Left: The south side of the new Kelley Hall. On the right side is the caretaker’s apartment. This photograph was taken in 1941.

Bottom Right: The west side or the front of Kelley Community Hall Building in 1941. The exact location of the building was chosen in November 1939 by the acting Mayor Frank Henning and councilmen H. J. Rohr, A. W. Scott, John Israel and J. O. Zscheile. The building was erected on the site of the old Kelley home.



### Kansas Day 2015

The museum's annual fundraiser, Kansas Day, is quickly approaching. The museum will be celebrating the state's 154th birthday with the fundraiser on Saturday, January 31, 2015. The details for the event are still being discussed, but we will have the Live/Silent Auction and a few Pioneer Activities. More details will be announced on our facebook page at [www.facebook.com/coffeymuseum](http://www.facebook.com/coffeymuseum), on email updates, and on flyers as they become available. We will need items for the auctions, monetary donations to help purchase supplies, and volunteers. If you are interested in helping in any way, please fill out the form below and return to the



Above: Photograph from last year's event. Volunteer Matt Sunseri helps a young girl make a rope. The rope making will be back again!

Top & Bottom Right: So far for the fundraising auctions, we have four tickets to Schlitterbahn Water Park in Kansas City, four one day park hopper passes to Disney World, Kansas City Chiefs cooler tote bag, and much more! We are accepting donations for the fundraising auctions until January 23rd. See form if you are interested in donating. Photographs of the items that will be in the auctions will be on our Facebook page with the information on the item, who donated, and the value of the item.



**Coffey County Museum– Kansas Day 2015 Volunteer/Donation Form**

Name: \_\_\_\_\_

Phone Number: \_\_\_\_\_

Address: \_\_\_\_\_

City: \_\_\_\_\_ State: \_\_\_\_\_ Zip: \_\_\_\_\_

Email: \_\_\_\_\_

Monetary Donation. Amount \_\_\_\_\_

Donation(s) for Auction: \_\_\_\_\_ Value of Item(s): \_\_\_\_\_

Volunteer to help with Kansas Day. Time available: \_\_\_\_\_

Desired spot: \_\_\_\_\_

We wish to Thank You in advance. The continued success of the museum is because of patrons like you!  
***Auction donations are due January 23rd unless other arrangements are made !***

### Church & School Restoration

Funds are still being raised to help restore the church and school. The buildings received a foundation lift this summer. The splitting siding on the buildings were filled this fall to temporarily fix it until we have funds to replace the boards in poor condition with new boards.

The interior of the building still needs repaired. There are cracks in the walls from years of the foundation settling. We are still raising funds for the restoration of the school and church buildings. Last month's event, Spiritual Dimensions, was a fundraiser for the restoration of the buildings. Kansas

Day fundraiser in January will also raise funds for the restoration. We are also collecting money for this cause. A donation form is located below if you are interested in donating to help restore the church and school buildings. A huge thank you to all of those who have already donated (see List of Donors) and to those who have already attended our fundraisers.

If you have any questions regarding the restoration or how to donate, please contact the museum at (888) 877-2653.

#### List of Donors:

##### Foundation Lift:

- ★ Joyce Holderby
- ★ Kevin & Linda Graber
- ★ Cindy Eccles In Memory of E. Lucille Woods Atherly for Bethel Church
- ★ Anonymous

##### Restoration:

- ★ Anonymous
- ★ Margaret O'Leary

## Bethel Church & Rural Dale School House

### Donation Form

The Coffey County Museum is a non-profit 501(c)(3) organization. Most donations can be tax deductible. Please see your accountant for more information on tax deductions.

Name: \_\_\_\_\_

Address: \_\_\_\_\_

City: \_\_\_\_\_ State: \_\_\_\_\_ Zip: \_\_\_\_\_

Phone Number: (\_\_\_\_\_) \_\_\_\_\_ Alt. Number: (\_\_\_\_\_) \_\_\_\_\_

Would you like your name listed as a donor? \_\_\_\_\_

If yes, how would you like your name listed? \_\_\_\_\_

Amount of Donation: \$ \_\_\_\_\_

Type of Donation (circle one):    Cash                      Check                      Money Order

A letter will be sent out as a receipt of the donation within a week of receiving the donation. If you have any questions, please call Erin at (620) 364-2653 or toll free at (888) 877-2653 or email erin@coffeymuseum.org.

**Lifetime Members**

Ackerman, Gayla Lonene	Evans, Terry L.	Knapp, Bill	Robbins, Carol A.
Adkins, Joan	Ferrara, Melchoir A.	Kniss, Clarence	Roth, V. Cameron
Allegre, Peter	Finkbiner, Patricia	Kniss, Donna	Salava, Dan
Allen, Dan	Finkbiner, Terry	Krebs, Tammy Hoover	Salava, Linda J.
Allen, Linda K.	First National Bank of Kansas	Krigbaum, Marilyn	Salisbury, Florence Conrad
Anliker, Tyler	Fitch, Duane	Kunkel, Connie	Sanborn, Patty A
Atherly, Mary Lou DeLong	Freeman, Bill	Kunkel, David	Sauder, Ray
Atkin, John D. M.D.	Freeman, Calvin Dean	Kunkel, Opal I.	Schick, Donald L.
Atkin, Patricia	Freeman, Diane	Lifecare Center of Burlington	Schick, Ruth
Banks, Peggy	Freeman, Elva	Little, Charles F.	Schultz, Achsah Carter
Beaty, W. Jean	Freeman, Jeff	Lowman, Nadine	Sleezer, Johnnie R.
Bedwell, L.F.	Freeman, Joan	Luke, Linda Sue	Sleezer, Retha I.
Birk, Julia Mae	Fulk, Doris L.	Luke, Lola Mae	Smith, Darlene
Bohrer, Paul	Garrett, Emily	Luke, Robert Standley, Jr	Smith, Ivan
Brecheisen, Betty	Garrett, Lisa I.	Martindale, Paul	Smith, Marjorie J.
Bruce, Nellie	Garrett, Millie	Matney, Linda J.	<b>Smith, V. LaVerne</b>
Bruce, Robert Lyle	Geery, Barbara	Mattox, Martha	Spade, Sharon
Central National Bank	George, Dennis	McAlister, M.A.	Spatz, Caroline B.
Citizens State Bank	Graber, Kevin	McAlister, V.S.	Spatz, Robert J.
City of Burlington	Graber, Linda	McConnell, John	Spriggs, Judy
City of Lebo	Griffin, Lena	McReynolds, Richard L.	Stine, Phyllis A.
Clapp, Grace (Sauder)	Hatch, Bonnie	Meader, Craig	Stukey, Arthur
Clark, Joanna	Hatch, Homer	Meader, Peggy	Stukey, Kent
Clark, Larry	Hayes, Edris Irwin	Merry, Barbara	Sunseri, Carol
Cochran, Dorothy	Herr, Bob	Merry, Gene	Trimble, Chuck
Cockrell, Gilan	Hess, Wayne	Montgomery, Dean R	Trimble, Joyce
Coffey County Chamber of	Holderman, Jenifer	Morey, George	Trimble, Randy
Commerce & Visitors Center	Holderman, Rich	Muench, Cheryl	Trostle, Jerilee
Coffey County Council for	Hood, Betty Jo	Muench, Rick	Trostle, Kerry
the Arts	Hood, Herbert	Neil, Eunice Johnson	TrustPoint Services
Coffey County Honda	Hoover's Thriftway	Norris, David	Ubert, Ann
Coffey County Hospital	Hoover, Carlita	Norris, Kasu Stinson	Ubert, Gary
Coffey County Land Title Co.	Hoover, Lisa	O'Leary, Margaret R.	Vannocker, Rebecca Louise
Inc	Hoover, Ned	Park, William H.	Veteto, Mona
Coffey County Library	Hoover, Ron	Parnay, Arlene Carpenter	Watson, Irene
Coldsmith, Don	Hoyt, Kent	Payne, Janet	Wildman, Kay
Coldsmith, Edna	Hoyt, Lori	Ponder, Mary Lou	Wilkinson, Al
Combes, Irene E.	Hull, Kelly J.	Ponder, Randy	Wilkinson, Opal
Combes, Kenneth L.	Hull, Sheldon L.	Purvis, Lois Jean	Williams, James E., Jr.
Conrad, Mary E.	Irey, Diana L.	Raaf, Clarence	Williams, Kathleen (Asper)
Cordell, Larry	Irey, Ronald W.	Raaf, Esther	Williamson, Arthur W.
Cox, Juanita	Johnson, Cloyce E.	Raaf, Fred A.	Williamson, Bernice
Croll, Susan	Johnson, Diane S.	Raaf, Gary	Williamson, Mitch
Curtiss, Jerilyn	Johnson, Jerry D.	Raaf, Harvey G.	Wilson, Ida M.
Curtiss, Larry M.	Johnson, John E.	Raaf, James L.	Wilson, Warren D.
Danford, Charlene	Johnson, Loren E.	Raaf, JoAnn	Wolf Creek Nuclear Operating
DeLong, Roy G.	Jones, Don	Raaf, Mark	Corporation
Dunlap, Dr. James	Jones, Carol	Raaf, Ralph	Wolken, Deanna
Dunlap, Judith	Jones, Fred S.	Raaf, Richard	Woods, Chloe
Edelman, Albert L.	Jones, Glenda	Raynesford, Carolyn C.	Woods, Frank
Edelman, Victor	<b>Jones, Paul M.</b>	Redding, Bud	Worrell, Dallas G.
Epting, Gary	Kaufman, Helen Garn	Redding, Carol	Zscheile, Lila L.
Epting, Polly	Keas, Sandy K.	Reeves, Glen W.	
Evans, Dean	Kennamore, Deborah	Reeves, Karen K.	
Evans, George	Kennamore, William "Pete"	Reimer, Paul	
Evans, Sue	Klubek, Brenda Grace	Reisbig, Clara L.	

\*new members are bolded

216 Total Lifetime Members

## Membership Form

Name: \_\_\_\_\_

Address: \_\_\_\_\_

City: \_\_\_\_\_ State: \_\_\_\_\_ Zip: \_\_\_\_\_

Phone Number: (\_\_\_\_\_) \_\_\_\_\_ Alt. Number: (\_\_\_\_\_) \_\_\_\_\_

Email address: \_\_\_\_\_

Would you like your newsletter emailed to you? \_\_\_\_\_ Would you like to be a volunteer? \_\_\_\_\_

Name as you would like it to appear on membership: \_\_\_\_\_

Type of membership (please circle one): \*Please mail completed form and check or money order to:

Individual (\$5.00 annual per person)

Business (\$15.00 annual per business)

Lifetime (\$100.00 one time fee per person)

Coffey County Museum

1101 Neosho Street

Burlington, KS 66839

If you have any questions or would like to know the status of your current membership, please call Erin at (620) 364-2653 or toll free at (888) 877-2653 or email [erin@coffeymuseum.org](mailto:erin@coffeymuseum.org).

## Gazebo Bricks

Purchase a personalized brick that surrounds the Gazebo for \$40 each.

Name: \_\_\_\_\_

Address: \_\_\_\_\_

City: \_\_\_\_\_ State: \_\_\_\_\_ Zip Code: \_\_\_\_\_

\*\*\*Please make checks or money orders payable to:

**Coffey County Historical Museum**


**Coffey County Historical  
Society & Museum**

1101 Neosho Street

Burlington, KS 66839

(620) 364-2653

(888) 877-2653

[www.coffeymuseum.com](http://www.coffeymuseum.com)

[visit.us@coffeymuseum.com](http://visit.us@coffeymuseum.com)

[www.facebook.com/coffeymuseum](http://www.facebook.com/coffeymuseum)

Each brick may have 2 lines of print with 13 spaces each.

## Coffey County Historical Society & Museum

1101 Neosho Street  
Burlington, KS 66839  
(620) 364-2653  
(888) 877-2653  
www.coffeymuseum.org  
Visit.Us@coffeymuseum.org



**Take a walk through history!**

We're on the web!  
coffeymuseum.org



Visit us on Facebook!  
www.facebook.com/coffeymuseum

Coffey County Historical  
Society & Museum  
1101 Neosho St.  
Burlington, KS 66839

## Calendar of Events

### November

11- Museum Closed- Veterans Day  
13- Board Meeting @ noon  
27-28- Museum Closed- Thanksgiving

### December

11- Board Meeting @ noon  
24- Museum Closed @ noon  
25-26- Museum Closed- Christmas

### January

1-2- Museum Closed- New Years  
8- Board Meeting @ noon  
23- Donations Due for Kansas Day  
Fundraiser  
31- Kansas Day Fundraiser

### February

12- Board Meeting @ noon

## VIEWING HOURS:

**Winter Hours:** (mid-November to mid-February)

Monday- Friday 10:00 a.m. to 4:00 p.m.

**CLOSED** on Weekends and Federal Holidays

**Summer Hours:** (mid-February to mid-November)

Monday- Friday 10:00 a.m. to 4:00 p.m.\*

Saturday & Sunday 1:00 p.m. to 4:00 p.m.\*

\*CLOSED Holiday Weekends except Memorial Day & Labor Day