



Timelines

Volume 9, Issue 1

February 2012

www.coffeymuseum.org

Inside this Issue:

CCM-Kansas Day	2-3
New Baby	4
E-Mail List	4
Girl Scouts	4
Schools	5
Valentines	6
Bricks	7
Lifetime Members	8-9
Membership	9

Board of Directors:

President: Carol Sunseri,
Waverly

Vice President: Retha
Sleezer, Gridley

Secretary: Becky Jewett,
LeRoy

Treasurer: Brenda Kludek,
New Strawn

Maureen Eggleston, LeRoy

Sheri Volland, Burlington

Victor Edelman, Lebo

Museum Staff:

Executive Director:
Deborah Kennamore

Curator of Collections:
Shirley Logan

Administrative Assistant:
Erin Burdick

Tree of Life Members

Our Sunflower Gallery, located at the front of the museum, received a new look with a mural from local artist, Jim Stukey. The “red wall” in the gallery received light blue paint from Daniel Kennamore. Then, Stukey put his artistic talents to work by painting a tree with a sunflower field behind the tree. On the bark are the words “Tree of Life Time Members.” He was able to paint this all in one day! We really appreciate him squeezing us in his very busy schedule. After the beautiful mural was dry, two layers of polyurethane was put on to protect this wonderful piece of art.

Lifetime member plaques are placed on the tree, because we consider the members the “life” of the museum. These names on the plaques donated \$100 OR MORE to become

lifetime members of the Coffey County Historical Society & Museum. Many of these members continue to make donations throughout the year. We are grateful for our lifetime members and all of our other members that continue to support the museum. If you would like to become a lifetime member or a regular member of the Coffey County Historical Society & Museum, please read page 9 or contact Erin at (888) 877-2653 or email at erin@coffeymuseum.org.

This mural joins other murals at the museum done by Jim Stukey. The most recent is the mural on the front of the building. Others in the museum are ones in the Cochran Gallery, Entryway of the Cochran Gallery, Flint Hills Gallery, and a picture inside the jail cell. Stukey has also done many other murals in the county and outside of the county. We encourage everyone to view his work, because photographs do not do justice.



Above: The finished product with the plaques hanging from the branches of the tree. To see more photographs of this project, go to our Facebook page at www.facebook.com/coffeymuseum.

Right: Jim Stukey adds the words to the trunk of the tree.

Coffey County Museum–Kansas Day 2012

Once again, the annual fundraiser has come and gone. Over 200 visitors attended the event this year. This year we changed the name of the fundraiser to Kansas Day since we schedule the event to coincide with Kansas' Birthday. The funds made from the event are going to be used for the upkeep of displays and artifacts at the museum. This year's events included a meal, bake sale, live auction, and silent auction.

Visitors had some great food to choose from in the meal line. There were Ham and Beans, Chili, Chili Dogs, Frito Pie, cornbread, chips, crackers, homemade pies, and cakes. The museum went to a flat rate of \$5 per meal deal or \$1 per dessert deal. The homemade pies were donated by our generous members and the community. There was a Kansas Birthday Cake and a chocolate cake that was also donated by members for the meal. Instead of asking for donation of ingredients, we asked for monetary donations. About nine people or businesses provided monetary donations to help purchase ingredients and supplies for the feed.

Nearby the meal was a bake sale. This was the first time we had a bake sale during the event and we feel that it worked out great! Members and the community was asked to make baked goods. All the items sold! There were cookies, breads, cake, pies, cinnamon rolls, and many other wonderful baked goods to choose from. We will be needing a lot more baked goods next year for the bake sale!

We would like to take this time to thank all of the generous members and community once again who

donated for the meal or bake sale in one way or another: Doris Van Arsdale, Della Meyer, Gene Merry, Arrowhead Hills Travel, Coffey County Insurance, Coffey County Land Title, Haas Oil, Sams Club, Coffey County Real Estate and Insurance, Melvin Freeman Memorial, Tonya McClafflin, Retha Sleezer, Diane Freeman, Sarah Withers, Sheri's Catering, Cindy Joy, Gwen Birk, Phil Fromme, Carol Sunseri, Laura Birk, Linda Hyde, Charlene Danford, Dan Salava, Connie Oliver, Shirley Fellers, Stan Luke, Nadine Graham, Barb Merry, and Phyllis Dorcas.

This year we added a Live Auction to the event. The auction started at 10:00 a.m. Auctioneer Cameron Roth donated his time and his auctioning skills to be our Auctioneer for the day. We had 31 "big ticket" items in the Live Auction. The items ranged from signed KU Basketball to handmade lap quilts, coin sets, Scentsy package to Disney World passes, wall décor. We are thinking about moving the time of the Live Auction towards the



This wonderful 151st Kansas Birthday Cake was donated by Sheri's Catering to be served during the fundraiser meal at the Kansas Day event. There was also a smaller version of this cake donated for the Bake Sale also held that day.

end of the Silent Auction for next year.

The Silent Auction had 91 items to bid on that was donated by area businesses, colleges, and attractions. The bidding of the Silent Auction items started the week of the Kansas



Some of our wonderful Kansas Day Volunteers working the meal line. Left to Right: Phil Fromme, Pam Stice, Cindy Joy, and Brenda Cherry. We had a total of 54 volunteers for the event with a combine 123.75 hours of volunteer time.

Coffey County Museum– Kansas Day 2012 (cont.)

Day fundraiser and ended the day of the event. Please check out our Facebook page for the unsold items at www.facebook.com/coffeymuseum.

There was a turnout of 40 bidders for all of the auctions. All of the items were on display in the Cochran Gallery in the doll cases and a few of the quilt cases the week of the event. We received many compliments on the way that the items were displayed. Pictures of the items that were up for the auctions were also found on our Facebook page at www.facebook.com/coffeymuseum. We would like to thank all the 75 businesses and people for their generous donations for our fundraiser. They are: A Lasting Impression, Allen County Community College, American Family Insurance, three anonymous donors, Arnold's Greenhouse, Bob Dole, Build-A-Bear Workshop, Burlington Auto Supply, Burlington Building Materials, Burlington Dental Center, Butler Community College, Caldwell's Napa Auto Parts, Carl Madl, Carol Sunseri, Central National Bank, City of Burlington, City of New Strawn, Coffey County Airport, Coffey County Economic Development, Coffey County Honda, Coffey County Land Title, Coffey County Real Estate and Insurance, Cosmosphere, Country Haven Inn, Wallace's Dairy Queen, Disney World, Emporia State University, Exploration Place, Faimon Publications, First National Bank of Kansas, Flinthills Eyecare, Freeman Plumbing, Heating & AC, George Van Arsdale, Gunlock & Gleue Designs, Hollywood Wax Museum, Hoovers Thriftway, Jim Stuke, Kansas City Chiefs, Kansas City Royals, Kansas City Zoo, Kansas Historical Society, Kansas Insurance

Department and Commissioner Sandy Praeger, Kansas State University, Katie's Kloset, KSNP 97.7 The Dawg, KU Athletics, LeRoy Cooperative, Lewis Oil, Lonnie & LaVerne Lendo, Martina McBride, Mary Kay Consultant Susan Croll, Merry Investments, Misty Marchant, Neosho County Community College, Ripley's Believe It or Not!, Rock Creek Country Club, Scentsy Counsultant Julie White, Sedgwick County Zoo, Silver Threads & Golden Needles, Stacy Reed, State Farm Insurance, Sticks & Weeds n' Wallpaper Things, Talking Rocks Cavern, The Medicine Shoppe, The Nesting Place, T-Rex Café, True Enterprise, TrustPoint Insurance, Uppercase Living Demonstrator Tina Grell, Uptown Style, Wichita State University, Wolf Creek Nuclear Operating Corporation, and Wonderscope Children's Museum of Kansas City.

An event this size would not be possible if it wasn't for our wonderful hard working group of Kansas Day Volunteers. They took an hour or more out of their day to help us with the fundraiser. This awesome group of volunteers were: Jennifer Anderson, Teresa Anderson, Patti Barrett, Gwen Birk, Frank Brush, Pat Brush, Brenda Cherry, Jake Cherry, Kenneth Combes, Tamara Danner, Phyllis Dorcas, Roger Douglass, Maureen Eggleston, Gary Epting, Polly Epting, Calvin Freeman, Diane Freeman, Karen Friend, Phil Fromme, Kathy Fromme, Linda Herman, Jon Hotaling, Becky Jewett, Dixie Johnson, Cindy Joy, Angie Kirchner, Kraig Kirchner, Brenda Klubek,



Kansas Day Volunteer, Marilyn Krigbaum, looks over some of the bid sheets to make sure items are being bid on correctly.

Marilyn Krigbaum, Lida Lawson, Stan Luke, Tony McClafin, Tonya McClafin, Barb Merry, Gene Merry, Della Meyer, Bruce Murray, Mark Petterson, Jerry Pittsenbarger, Becky Reeves, Kristina Reiling, Cameron Roth, Dan Salava, Patti Sanborn, Bob Saueressig, Retha Sleezer, Rose Spence, Virginia Spence, Pam Stice, Forrest Stockwell, Carol Sunseri, Matt Sunseri, Sheri Volland, Sarah Withers, and Marv Wither.

If you would like to be added to our call list to help or to donate next year, please contact the museum at (888) 877-2653 or email erin@coffeymuseum.org. We will be sending out letters to all about the Kansas Day 2013 fundraiser towards the end of this year. It will also appear in the November issue of the Timelines. Kansas Day 2013 will be held the last Saturday in January.

New Year, New Baby

Our Curator, Shirley Logan, and her husband, Eric Logan, would like to announce the birth of their son, Chas William Logan. He was born January 19th at the Coffey County Hospital. Chas weighed 5 pound and 13.5 ounces and was 18.5 inches long. He is welcomed by his big sister, Tierra, who is a senior at Burlington High School.

Maternal grandparents are William and Teresa Gorge, Burlington. Paternal grandparents Charles Logan, Topeka, and Loretta and Eric Kaye, Scarborough, England.



Chas William Logan

E-Mail List

Due to recent budget cuts, we are trying to cut back everywhere including postage. Postage rates just went up in the month of January. We are encouraging members to get on our email list. Once on our email list, you will no longer receive paper mail from us, but you will receive all of it

electronically. All greeting cards (birthday, anniversary, congratulations, etc...) will be sent electronically if you choose to be on the email list. Also you will receive our quarterly newsletter, Timelines, electronically too. The benefits of having the Timelines sent by email is

they are colorful, received faster, and you can enlarge the print. Please contact Erin if you would like to be on the email list. You can call toll free (888) 877-2653 or simply email Erin at erin@coffeymuseum.org. You will need to give your name and email address.

100 Years of Girl Scouts

March 12th marks the 100th birthday of the Girl Scouts. The founder of the organization was Juliette Gordon Low or as she was known to family and friends, "Daisy." Juliette Gordon Low met Sir Robert Baden-Powell, founder of Boy Scouts and Girl Guides, in England and became interested in the group. On March 12, 1912, she gathered 18 girls to register the first troop of American Girl Guides. The next year, the organization name was changed to "Girl Scouts." In 1915, the organization was incorporated and Low was finally name the founder in 1920.

Since then, the organization has taught girls courage confidence, and character. Today, Girl Scouts has a membership of over 3.2 million girls and adults. The organization is also found worldwide with a membership of 10 million girls and adults in 145 countries. More than 50 million

American women participated in Girl Scouts during their childhood.

The most famous Girl Scout program is the Girl Scout Cookie Program. In 1917, girls started to sell cookies as a way to finance troop activities and trips. Today, the Girl Scout Cookie Program is the largest girl-led business in the United States. The program teaches the girls goal setting, decision making, money management, people skills, and business ethics.

Happy 200th Birthday, Girl Scouts!



Burlington Brownie Troop #4 taken on March 3, 1952. Front Row: Charlene Roth, Darla Dee Rainbolt, Dorothy Todd, Karen Williams, Mary Ann Johnson; Second Row: Joyce Bergman, Lynne Wildman, Sherilyn Reisbig, Carol Sue Johns; Third Row: Loretta Jeanne Cullen, Mary Elizabeth Corwin, Cathryn Zscheile, Nancy Jayne Johnson, and Alberta Shepherd; Back Row: Leaders Mrs. Carl (India) Wright and Mrs. Bill (Mildred) Batdorf.

Schools

The latest project at the museum is getting photographs from each school district and hanging them up in the Sunflower Gallery. We do have several photographs in our archives, but we do not have photographs of each school building. If you have a photograph of a Coffey County school building (with people in the picture or not), please contact the museum. If you wish not to donate the picture, you can email a scanned copy (resolution 300 dpi) to erin@coffeymuseum.org or you can bring it into the museum to scan.

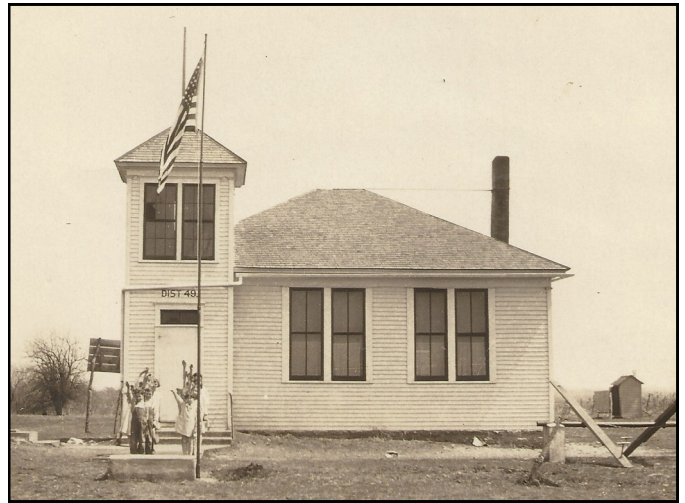
The staff has gone through the 1878, 1901, and 1910 land atlas maps to locate where the schools once stood. We have discovered that some of the district school buildings were moved a few miles away from their original location for some reason.

In 1878, there were 69 organized school districts in Coffey County with a population of 3,209. There were 67 school houses in the county at that



District #23 Indian Hill School. The photograph was taken during the 1937-1938 school year. The school was located on 18th road between the roads Contour and Blackbird.

time. 54 were frame buildings, 2 were brick buildings, and 11 were stone buildings. Today, there are only three school districts left in the county: USD 243 Lebo-Waverly, USD 244 Burlington, and USD 245 Southern Coffey County. If you have any information about the extinct schools, we would enjoy hearing about it!



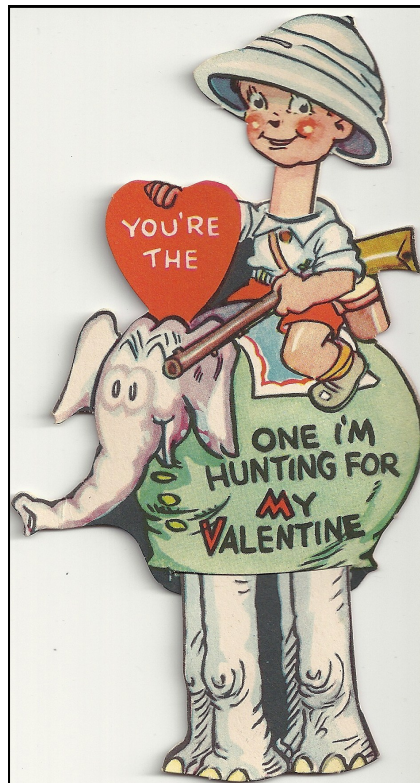
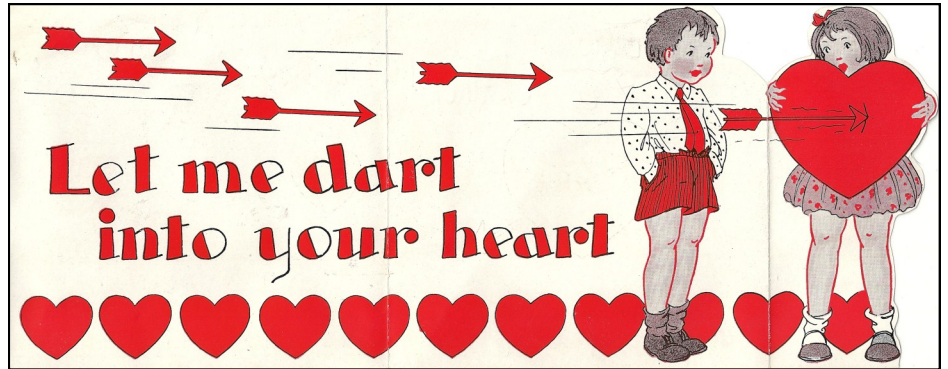
District #49 Mount Pleasant School. This photo was taken in 1931. This building is still standing at the corner of 10th Road and Garner Road. The tower on top had been removed sometime ago with the school bell on display outside of the one room schoolhouse on the museum grounds. We also have District #44 Rural Dale school house on the museum grounds.



LeRoy's first public school house was a two story frame building with four rooms. It was later consumed by fire on the night of January 29, 1895. Everything was lost in the fire. The building was estimated at \$3,000 and contents were estimated at \$2,000. The insurance on the building was \$1,250 and the contents were \$250. School continued in the Baptist church in LeRoy until the new building was built on the old site. During this time, the teachers paid for the supplies out of their own salaries.

Happy Valentine's Day!

The museum has numerous items in our paper archives that many people do not get to see because we are limited on display space. With Valentine's Day being in the month of February, we thought we would share some of the Valentine Cards from the early 1900's to the 1940's that are in our Paper Archives in our newsletter. We hope you enjoy!



Bricks

Gazebo bricks make a great Christmas present! There are only 500 bricks that can be personalized and we have already sold over half of them. The personalized bricks form a walkway encircling the gazebo. Dedication bricks are a wonderful way to recognize, memorialize or honor a loved one while providing support for the museum. The bricks can be

engraved with two lines of 13 characters each. Bricks sell for \$40 each and can be purchased at the museum gift shop or by mailing the form (below) to the museum. We still have room for your name! So, hurry in and make sure your name is engraved in history! These bricks have been purchased since our last newsletter: **In Memory Ella Raaf, KM**

and LU Allegre. The proceeds of the bricks go towards the upkeep of the gazebo.

*Please visit our website for the full list of Gazebo Brick names.
www.coffeymuseum.org

“Dedication bricks are a wonderful way to recognize, memorialize or honor a loved one while providing support for the museum.”



Step Into The Past...

Step into Coffey County History!

Personalized bricks are \$40 each. All proceeds will fund the upkeep of the gazebo located on the Museum grounds.

Name: _____

Address: _____

City: _____ State: _____ Zip Code: _____

***Please make checks or money orders payable to:

Coffey County Historical Museum

Coffey County Historical
 Society & Museum
 1101 Neosho Street
 Burlington, KS 66839
 (620) 364-2653
 (888) 877-2653
www.coffeymuseum.com
director@coffeymuseum.com
www.facebook.com/coffeymuseum

Each brick may have 2 lines of print with 13 spaces each.

Lifetime Members

Ackerman, Gayla Lonene	Dunlap, Judith	Jones, Fred S.	Raaf, James L.
Adkins, Joan	Edelman, Albert L.	Jones, Glenda	Raaf, JoAnn
Allegre, Peter	Epting, Gary	Kaufman, Helen Garn	Raaf, Mark
Allen, Dan	Epting, Polly	Keas, Sandy K.	Raaf, Ralph
Allen, Linda K.	Evans, Dean	Kennamore, Deborah	Raaf, Richard
Anliker, Tyler	Evans, George	Kennamore, William "Pete"	Raynesford, Carolyn C.
Atherly, Mary Lou DeLong	Evans, Sue	Klubek, Brenda Grace	Redding, Bud
Atkin, John D. M.D.	Evans, Terry L.	Knapp, Bill	Redding, Carol
Atkin, Patricia	Ferrara, Melchoir A.	Kniss, Clarence	Reeves, Glen W.
Banks, Peggy	Finkbiner, Patricia	Kniss, Donna	Reeves, Karen K.
Beaty, W. Jean	Finkbiner, Terry	Kunkel, Connie	Reimer, Paul
Bedwell, L.F.	Fitch, Duane	Kunkel, David	Reisbig, Clara L.
Birk, Julia Mae	Freeman, Bill	Kunkel, Opal I.	Robbins, Carol A.
Bohrer, Paul	Freeman, Calvin Dean	Lifecare Center of	Salava, Dan
Brecheisen, Betty	Freeman, Diane	Burlington	Salava, Linda J.
Bruce, Nellie	Freeman, Elva	Little, Charles F.	Salava, Tammy
Bruce, Robert Lyle	Freeman, Joan	Lowman, Nadine	Salisbury, Florence Conrad
Central National Bank	Fulk, Doris L.	Luke, Linda Sue	Sanborn, Patty A
Citizens State Bank	Garrett, Emily	Luke, Lola Mae	Sauder, Ray
City of Burlington	Garrett, Lisa I.	Luke, Robert Standley, Jr	Schick, Donald L.
City of Lebo	Garrett, Millie	Martindale, Paul	Schick, Ruth
Clapp, Grace (Sauder)	Geery, Barbara	Matney, Linda J.	Schultz, Achsah Carter
Clark, Joanna	George, Dennis	Mattox, Martha	Sleezer, Johnnie R.
Clark, Larry	Griffin, Lena	McAlister, M.A.	Sleezer, Retha I.
Cochran, Dorothy	Hatch, Bonnie	McAlister, V.S.	Smith, Darlene
Cockrell, Gilan	Hatch, Homer	McConnell, John	Smith, Ivan
Coffey County Chamber of	Hayes, Edris Irwin	McReynolds, Richard L.	Smith, Marjorie J.
Commerce & Visitors	Herr, Bob	Meader, Craig	Spade, Sharon
Center	Hess, Wayne	Meader, Peggy	Spatz, Caroline B.
Coffey County Council for	Hood, Betty Jo	Merry, Barbara	Spatz, Robert J.
the Arts	Hood, Herbert	Merry, Gene	Spriggs, Judy
Coffey County Honda	Hoover's Thriftway	Montgomery, Dean R	Stine, Phyllis A.
Coffey County Hospital	Hoover, Carlita	Morey, George	Stukey, Arthur
Coffey County Land Title	Hoover, Lisa	Muench, Cheryl	Stukey, Kent
Co. Inc	Hoover, Ned	Muench, Rick	Sunseri, Carol
Coffey County Library	Hoover, Ron	Neil, Eunice Johnson	Trimble, Chuck
Coldsmith, Don	Hoyt, Kent	Norris, David	Trimble, Jenifer
Coldsmith, Edna	Hoyt, Lori	Norris, Kasu Stinson	Trimble, Joyce
Combes, Irene E.	Hull, Kelly J.	Park, William H.	Trimble, Randy
Combes, Kenneth L.	Hull, Sheldon L.	Parnay, Arlene Carpenter	Trostle, Jerilee
Conrad, Mary E.	Irey, Diana L.	Payne, Janet	Trostle, Kerry
Cordell, Larry	Irey, Ronald W.	Ponder, Mary Lou	TrustPoint Services
Cox, Juanita	Johnson, Cloyce E.	Ponder, Randy	Ubert, Ann
Croll, Susan	Johnson, Diane S.	Purvis, Lois Jean	Ubert, Gary
Curtiss, Jerilyn	Johnson, Jerry D.	Raaf, Clarence	Vannocker, Rebecca Louise
Curtiss, Larry M.	Johnson, John E.	Raaf, Esther	Veteto, Mona
Danford, Charlene	Johnson, Loren E.	Raaf, Fred A.	Watson, Irene
DeLong, Roy G.	Jones, Don	Raaf, Gary	Wildman, Kay
Dunlap, Dr. James	Jones, Carol	Raaf, Harvey G.	Wilkinson, Al

Lifetime Members (cont.)

Wilkinson, Opal	Williamson, Mitch	Wolken, Deanna	
Williams, James E., Jr.	Wilson, Ida M.	Woods, Chloe	*new members are bolded
Williams, Kathleen (Asper)	Wilson, Warren D.	Woods, Frank	205 Total Lifetime
Williamson, Arthur W.	Wolf Creek Nuclear	Worrell, Dallas G.	Members; 3 new Lifetime
Williamson, Bernice	Operating Corporation	Zscheile, Lila L.	Members this year.

Have You Renewed Your Membership for 2012?

If you have not already, it is time to renew your membership for 2012. Annual membership is \$5.00 per person per year. Members will receive a quarterly newsletter, invitations to all upcoming grand openings, and a vote during election time of the board members during the annual meeting.

LIFETIME MEMBERSHIP is our best value; with a donation of \$100 or more per person you no longer have to pay the \$5 annual dues. As a lifetime member you will experience all the perks of being a member plus your name will be engraved on a plaque at the entrance of the museum and receive a Lifetime Membership

Certificate. Please take a minute to fill out the membership below and return to the museum with your payment. If you would like to check on the status of your membership, please contact Erin at (620) 364-2653 or toll free (888) 877-2653 or by email at: erin@coffeymuseum.org.

Membership Form

Name: _____

Address: _____

City: _____ State: _____ Zip: _____

Phone Number: (_____) _____ Alt. Number: (_____) _____

Email address: _____

Would you like your newsletter emailed to you? _____ Would you like to be a volunteer? _____

Birthday: ____/____/____

Anniversary: ____/____/____ Spouse Name: _____

Type of membership (please circle one):

Individual (\$5.00 annual per person) Lifetime (\$100.00 one time fee per person)

Name as you would like it to appear on membership: _____

*Please mail completed form and check or money order to:

Coffey County Historical Museum
1101 Neosho Street
Burlington, KS 66839

If you have any questions or would like to know the status of your current membership, please call Erin at (620) 364-2653 or toll free at (888) 877-2653 or email erin@coffeymuseum.org.

Coffey County Historical Society & Museum

1101 Neosho Street
Burlington, KS 66839
(620) 364-2653
(888) 877-2653
www.coffeymuseum.org
director@coffeymuseum.org



Take a walk through history!

We're on the web!
coffeymuseum.org



Visit us on Facebook!
www.facebook.com/coffeymuseum

Calendar of Events

February

9- Board Meeting
20- Museum Closed

March

8- Board Meeting
11- Daylight Savings Time

April

6- Museum Closed
8- Easter
12- Board Meeting


May

10- Board Meeting
13- Mother's Day
28- Museum Closed

If you would like to make a non-monetary donation to the museum, please view our "Wish List" in our notes on our Facebook page or contact the museum.

Save your Best Choice labels with the UPC code (proof of purchase) and bring/mail them to the museum to help raise funds for the museum. The funds will go towards the upkeep of displays and help fund activities for school tours.

Best Choice

Look through your issue of the Timelines and see if you can find the pioneer wagon that looks like this: . If you find the wagon, contact the museum and receive a free cookbook.

Coffey County Historical Society & Museum
1101 Neosho St.
Burlington, KS 66839

Non-Profit Organization
U. S. POSTAGE
PAID
Burlington, KS 66839
PERMIT NO. 72