

# Timelines

Coffey County Historical Society & Museum

## Volunteer Luncheon

A luncheon was held for volunteers of the Coffey County Museum on April 28 to show our appreciation for everything that they do for the museum.

Served at the luncheon was chicken salad on croissants, a vegetable tray, coffee and water, and a dessert of green Jell-O topped with whipped cream and served in wine glass stemware. Place settings were decorated with stemware

containing a pansy which the guests took home with them. After lunch, a drawing was held with each guest receiving a gift. The luncheon ended with our Executive

Director, Deborah Kennamore, thanking our guests for their dedicated hours given toward keeping the museum open on weekends .

In attendance were: Andrea Badgley, Bill Freeman, Millie Garrett, Herb and Jody Hood,



Kent Hoyt, Lois Hills, Della Meyer, Mary Ann McAlister, JoAnn Phillips, Julia Plank, Bud Redding, Nancy Raymer, Darlene Smith, and Retha Tweedy.

The luncheon was put together by the staff at the museum, including Shirley Gorge, Kristin Smith, Jean Beaty, and Deborah Kennamore.



### Chicken Salad Recipe

2 1/2 cups diced chicken, cooked

4 bacon strips, cooked and crumbled

1 can (8 oz.) sliced water chestnuts

1/2 cup thinly sliced celery

1 cup halved green grapes

3/4 cup salad dressing or mayonnaise

1-2 tablespoons minced onion

1 teaspoon lemon juice

1/4 teaspoon ground ginger

Dash Worcestershire sauce

Salt and pepper to taste

Combine chicken, bacon, water chestnuts, celery and grapes in large bowl, set aside. In another bowl whisk together remaining ingredients, add to salad and toss to coat. Chill until serving. Yield: 4-6 servings.



### Board Members:

- JoAnn Phillips-President
- Jody Hood-Vice President
- Andrea Badgley-Secretary
- Kent Hoyt-Treasurer
- Duane Fitch-Burlington
- Bud Redding-Waverly
- Kelly Hull-Lebo

### Staff:

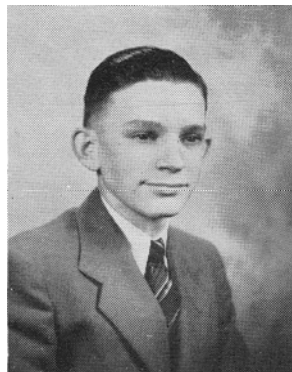
- Deborah Kennamore-Executive Director
- Shirley Gorge-Curator
- Jean Beaty-Office
- Kristin Smith-Staff
- Courtney Meeker-Staff

### Inside this issue:

<i>Featured Historical Society Member</i>	2
<i>Guttering</i>	2
<i>Dolls</i>	3
<i>Back Room</i>	4
<i>Burlington Class Reunion</i>	4
<i>Grounds Work</i>	5
<i>New Displays</i>	5
<i>Korean War Artifacts</i>	6

## June's Featured Coffey County Historical Society Member....Duane Fitch

Duane Fitch was born and raised on Saint Lawrence Street in Burlington, and he is a lifelong member of the community. He graduated from Burlington High School in 1946. Duane has been a Coffey County Historical Society member since 1985, and the reason why he became a member is because he feels that as he gets older the past becomes more important. In addition to being a Coffey County Historical Society member, Duane is also a member of the Methodist Church, the Masonic Lodge, and the Retired Federal Employees. Duane's principal



*Duane's senior picture.*

hobbies include traveling and working on genealogy. Duane feels that the museum should be most proud of the well arranged displays and the fact that they change every so often. He also feels that the museum should be proud of the genealogy library because it is far ahead of most small libraries as far as the amount of newspapers, Censuses, and obituaries. Duane plays a big part in the museum because of his vast knowledge of Coffey County history. Any time someone has a question that

we can't answer, we know that we can count on Duane to give us the information we need. This past April when the museum held a drawing for the 125th Coffey County Fair signature quilt, it was won by Duane. Duane says that people in the community should become members of the Historical Society because anyone living here for a while becomes part of Coffey County history. In years to come their activities will figure into the history of Coffey County.



*Duane with his signature quilt.*

### Guttering

For the past week or so, David Stratton with Go-4-Gutters has been working on the gutters here at the museum. He has repaired the gutters that were damaged by ice during the winter. He has also fixed the down spouts and put leaf guards on the gut-



*David Stratton working on the gutters.*

ters. Another thing he has done is replace the old gutters on the school and church, making it easier to put up the gutters when it's time to mow. He expects to be done within the next couple of days.

## Dolls

Kristin Smith has been working on accessioning our huge collection of dolls. While working with the dolls she has come across many that she finds to be very interesting.

One set of dolls was donated by Charles Puffer in memory of his sister Virginia Puffer. The set of dolls are handmade and were created around 1870 by Charles and Virginia's ancestor Hannah Puffer. Hannah was the wife of Charles Puffer who came to Burlington in 1863. Charles Puffer served as a quartermaster for six months, was a successful merchant in

Burlington for several years, and was a member of the Kansas Legislature. Charles and Virginia Puffer lived in the first house west of the post office in Burlington.

Hannah made the dolls for their children and each one represents a friend of the family. The set includes dolls named Belle Hall, Frankie Hall, George Hall, Millie Hall, Rose Mosher, Josie Cole, Minnie Cole, Maggie Taylor, Lucy Taylor, Hattie Willits, Mamie Houston, Maud Holmes, Mug Hildreth, Fannie Belle Hallie, Glenna Cross, and Cora Cross.

Another interesting doll Kristin came across was the Kewpie doll. The Kewpie dolls are based on the drawings of Rosie O'Neill that appeared in Ladies' Home Journal in 1909. Kewpies were extremely popular in the early 1900s. They were originally made out of bisque and eventually celluloid. The first plastic Kewpie dolls were introduced in 1949. Early dolls are highly collectible and worth thousands of dollars. The success of these dolls made Rosie O'Neill very rich and famous. It was one of the first times that a woman was successful in the media business.



*Puffer family doll collection.*



*Other half of the Puffer doll collection.*



*Kewpie doll, handmade by Cora Krapes.*

## New Bricks Sales

Brady Rand Brett Rand	The Rands Brian & Lori	Coffey County Chamber 2005	Pete W Corbin Helen M Corbin	BHS Graduates Class 1955	Millers of Spring Creek
Darcy Angela Brennan Brown	Brown Quality Builders Inc.	Laverne Crotts Bedwell	Fred & Bernice Raaf	In Memory of Esther Raaf	Louise Clason Strawder
Gary & Linda Keys	In Memory of Juanita Cox	Frank H. Jennings, Lebo	Fred & Lydia Jones	Ella May and Wesley Hunter	



## Back Room

Shirley and Kristin have been working on cleaning out the back room. They have organized artifacts on shelves, cleaned up the mezzanine, and done other general cleaning that needed to be done.

While working with the artifacts Shirley has found several interesting artifacts. One of which is an ether mask from the collection of Dr. A.B. McConnell.

Ether was first used as an anesthetic by an American

doctor named Crawford Williamson Long on March 30, 1842. Ether is no longer used as an anesthetic because it is flammable and can irritate certain people. In the 19th century, it was marketed as a cure-all and a recreational drug during the Temperance Movement. During the Temperance Movement it was in bad taste for a woman to be seen consuming alcohol at social functions, so sometimes

ether would be used instead. Today safer, less volatile anesthetics are used instead of ether. However, ether can be used to remove ticks from humans and animals. It is also used in the production of freebase cocaine.



*Ether mask used by Dr. McConnell*



*Endotracheal kit used to perform emergency tracheotomies.*

Another interesting artifact in the back room is an endotracheal kit, which is also from the collection of Dr. A.B. McConnell. It was used in performing emergency tracheotomies.



*Artifacts after being organized on the shelves.*



*The back room after being cleaned.*

## Burlington Class Reunion

The Burlington High School alumni reunion is going to be held on June 17th. It will start with the registration

reception in the commons of the high school at 1:30 p.m. Then at 5:30 there will be a banquet in the gym. The

program will start at 7:30. Lastly, there will be a dance at the Eagle's Club at 9:00 p.m.



## Grounds Work

In April, Kristin and Shirley planted new flowers in the entryway, along the boardwalk, and in the flowerbeds out front. In the front they planted rose moss and melanpodium showstar. Geraniums and sweet potato vines were planted in the flower boxes along the boardwalk.



*Flowers out front and the repaired gazebo.*

They also planted rose moss around the birdbath out by the school.

Kristin did various other things to improve our grounds as well. She cleaned out the gutters, replaced the old lattice on the little gazebo out front, fertilized the yard, put weed and feed on the grass to kill weeds, and she painted a bench out by the playground. She plans on painting the

other bench when she has time. In addition to all this, Kristin and Pete Kennamore have been keeping up with the mowing, weed eating, and edging.

Also, over Memorial Day weekend, Kristin and Shirley put up an American flag bunting around the Hoover Gazebo. The bunting was donated by Tammy Hoover-Salava.

Kristin, Courtney, and Alex Furse are now working on weatherproofing the boardwalk.



*Bunting donated by Tammy Salava-Hoover.*



*Roses next to the birdbath.*



*Flowers out front.*

## New Displays

Shirley and Kristin have been working on new displays, one of which is a Coffey County Jail display. The first jail in Burlington was built in the 1930s. During the 1970s it was deemed inadequate to hold prisoners, so the prisoners were then transported out of the county.



*Three doors that were once at the Coffey County Jail.*

The current jail was completed in 1986.

Another display Shirley and Kristin are working on is the livery display. A livery is a place where horse owners can board their horses in return for a fee.

There are different kinds of liveries, one is the full livery where the horses are managed, exercised, and sometimes even trained by



*The livery display under construction.*

the stable. Another kind is the part livery in which part of the management of the horse is provided, but no exercise is given to the horse by the stable. The last type of livery is a do-it yourself livery in which the horse is only housed at the stable, however, sometimes the staff will give hay and water to the horse.

## Coffey County Historical Society & Museum

1101 Neosho Street  
Burlington, Kansas 66839

Phone: 620-364-2653  
Toll Free Phone: 888-877-2653  
Email: [director@coffeycountymuseum.org](mailto:director@coffeycountymuseum.org)

<http://www.coffeycountymuseum.org>

## Korean War Artifacts

Here at the Coffey County Museum we have a great collection of military items, but we do not have much in the way of Korean War memorabilia . If anyone would like to donate their artifacts from the Korean War please call or come into the museum. We would greatly appreciate it. We feel that any artifact from the Korean War would be a great addition to our military room.

