

# Timelines

VOLUME 2, ISSUE 7

JUNE 30, 2005

## INSIDE THIS ISSUE:

Parking Lot	2
Bees	2
Entrance	3
Summer Activities	3
Brochure Exhibit	4
Cowtown Progress	4
Courtney	4
Kansas Getaway	5
Kristin's Workshop	5
Contests	5
Brick Sales	6-9
Website Update	10

## Grand Opening of Gazebo

After years of planning and hard work the gazebo is finally finished. The grand opening will take place on Thursday, July 28 from 5:30 to 6:30 p.m. The event will include live entertainment provided by the Gravel Road Band, homemade ice cream, and chocolate sheet cake. Bring your lawn chair or blanket to sit and enjoy the activities.

Deborah has been working with Liz

Alford on sending out invitations for the dedication. They will be sent at the end of June to volunteers, members of the museum, and everyone who purchased a brick.

While the gazebo is finished, there is still work to be done around it. Cement will be poured in a pathway encompassing the gazebo, and this is where the personalized bricks will go. We are still selling bricks and they can be purchased for \$40 a piece at the Gift Shop.

The gazebo will be



used for ice cream socials, wedding receptions/ceremonies, band concerts, birthday parties, and various other events. If you would like to reserve the gazebo for a special event, please call the museum in advance at (620) 364-2653.



### BOARD MEMBERS:

- Kelly Hull- President
- Jo Ann Phillips- Vice President
- Jody Hood- Secretary
- Kent Hoyt- Treasurer
- Andrea Badgley- Burlington
- Duane Fitch- Burlington
- Bud Redding- Waverly

### BOARD MEMBERS:

- Deborah Kennamore- Executive Director
- Shirley Gorge- Curator
- Jean Beaty- Office
- Kristin Smith
- Courtney Meeker

## Parking Lot

If you've been to the museum recently you probably noticed that the parking lot has been redone. The old parking lot was deteriorating rapidly and had so many potholes that something had to be done.

The work took place through the months of May and June. The renovation included removing the asphalt, putting down new asphalt, and painting white lines for the new spaces. With the new lot

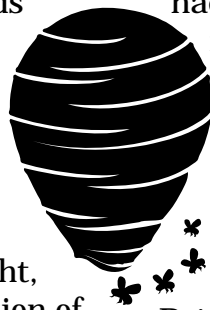
there are more parking spaces and no more potholes.

The new parking lot was made possible through the Coffey County Commissioners.



## Our Little Visitors

This past month we have had thousands of visitors. The majority were tiny, yellow and black, angry ones that congregated every day in the church. That's right, we had an infestation of bees.



We had so many that we had to close the church for a while to keep our guests safe.

Fortunately, our rescuers— Jeff Fleming, Stanton Wurm, Tiny Jackson, and Brian from McKinzie Pest

Control— all came to save us.



## 125th Coffey County Fair T-shirts

In support of the Coffey County Fair Board we are selling 125th Coffey County Fair t-shirts and hats for \$10 each. The shirts come in two colors-yellow and white.



## Entrance

The staff has been hard at work planting flowers in the flower beds and boxes. Also, Kristin planted new grass in a strip beside the parking lot. This year our entrance is filled with impatiens, begonias, pansies, vine geranium and many more beautiful flowers. So come stop and smell the roses (theoretically, of course!), and see all of the wonderful changes happening here every day.



## Summer Activities at the museum

Falicity Harred worked hard on a new brochure that includes many activities to do here at the museum.

We love to have large tour groups come to the museum. We would be more than happy to make these tours guided if scheduled in advance. For guided tours we try to include a hands on activity, for example, peeling apples, tasting hard tack, looms, pioneer dolls, pioneer games, etc.

The possibilities are



endless in our Genealogy Library:

- *Discover the lineage of your name and family in Coffey County*
- *Have your children read the newspaper from the day of their birth*
- *Find your ancestors*
- *Look at pictures from old Coffey County townships*
- *See relatives' high school pictures in yearbooks*
- *Read about Coffey County and Kansas history*

You could also bring

your kids in to find information on starting a collection or bring your family to the museum for a picnic in our park. We have several picnic tables and a playground for kids to play on.

We also can help kids find a pen pal anywhere in Kansas. It is an opportunity to find out how life is different in other parts of Kansas. Stop by the museum and we will get your information to share with a pen pal.



## Travel Brochure Exhibit

From February 14 through April 16, 2006, the Coffey County Museum will receive the K is for Kansas traveling exhibit. The exhibit explores Kansas from A to Z and was produced and organized by the Kauffman Museum. It is a special Kansas alphabet that includes famous people, places, things, plants, and

animals that are important to our state. For example, A is for aromatic aster, which is a common prairie wildflower. Its small,

purple, daisy-like blossoms provide nectar for small insects, including butterflies, long after other flowers have finished

blooming.

K is for Kansas is full of things to look at, to touch, and to discover. This traveling exhibit is a great opportunity for people of all ages to learn more about Kansas.



## Kristin's Workshop

On June the 21st-23rd, I was able to attend the Past Perfect workshop in Merriam, Kansas. The workshop was held in the Lee Jeans Corporate Archives building. Instructions were given on the many uses and possibilities of Past Perfect, the program we use here at the Coffey County Museum.

While we were at the workshop, we had the opportunity to tour the Lee Jeans Corporate Archives Heritage Hall. Heritage Hall is where the company has items on display from the beginning of the Lee Company to the present. This was

very interesting.

Did you know that the Lee Company did not start out making jeans or denim garments? The Lee Company started out as a hardware store. At one time they were based in Salina, KS.

A few of us curious ones also had the opportunity to

tour the Lee Companies Archives. We saw some very interesting clothing fashions from the early day denim through the 60's and present day.

How many of you remember the Buddy Lee doll? The Lee Corporate Archives has quite a collection of these dolls outfitted in many of the uniforms and clothing that the Lee Company manufactured. The Lee Company liked to hold competitions to name new products; one of these was the Wiz-It. This is an overall with a zipper running up the middle of the overall bib. Overall it was a very interesting and educational three days.



## Kansas Getaway

**Travel Kansas and win many exciting prizes!**

*Monthly prizes include:*

- ◆ Tickets for shows and other attractions
- ◆ Meal passes
- ◆ Hotel accommodations

*Grand prizes are:*

- ◆ Coleman camping gear
- ◆ Portable DVD player
- ◆ Digital camera
- ◆ GPS

- ◆ Luggage
- ◆ Binoculars
- ◆ Canoe
- ◆ And much, much more!!

Other prizes consist of a weekend at the Great Wolf Lodge, Kansas Speedway, and other exciting stops to cattle towns.

**All you have to do is travel a minimum of**

**100 miles from your home town and take pictures of you and your family enjoying yourselves!! Happy traveling!**

If you come to the museum and are traveling more than 100 miles from home then we will take your picture with our camera and submit it over the internet for you.

## Courtney's Pictures/Library

Recently we discovered that there were original photos and various other paper artifacts in the Coffey County binders that are in the genealogy library. I am going through and making copies of all the originals

and putting the copies back into the binders. This will keep the photos and other artifacts from being touched and it will ensure that they will stay intact.

After all the copies have been made, the originals will

be numbered, entered into a database of artifacts on Past Perfect, and then put into the paper archives.

I have copied a couple hundred pictures, but I am almost through all the binders.

## Contests

There are several new contests here at the museum. One is called What's Wrong with our Exhibit? There are ten displays in which there are misplaced artifacts, visitors can get a form from the front office and write down the item they think is out of place. Once they are finished the form can be submitted at the Gift Shop and at that time they will

receive a color changing pencil. At the end of the summer we will draw a name from all the correct submissions and a grand prize will be awarded.

There is also a coloring contest. Coloring pages are available in a brochure in the entryway or at the Gift Shop. Kids can color the pages or draw their own pioneer scene and return it to the museum

by August 15. Just for submitting the picture kids will receive a color changing pencil. The winner of the coloring contest will receive a gift basket worth over \$25. The best pictures will be displayed in the museum for everyone to see.

The contests are available to children 14 and under.

# Bricks

**This might be your last opportunity to purchase a brick.**

## Step Into The Past...

Step into Coffey County History!

Personalized bricks are only \$40. All proceeds will fund the building of a gazebo located at the Museum.

Name \_\_\_\_\_

Address \_\_\_\_\_

City \_\_\_\_\_ State \_\_\_\_\_ Zip Code \_\_\_\_\_

\*\*Please make check or money orders payable to:

**Coffey County Historical Museum**

Each brick may have 2 lines of print with 13 spaces each.

Please use the

boxes to the right to print requested personalization.


### The Coffey County Historical Museum

1101 Neosho Street  
 Burlington, KS 66839  
 620-364-2653  
 1-888-877-2653

[www.coffeycountymuseum.org](http://www.coffeycountymuseum.org)

email:

[director@coffeycountymuseum.org](mailto:director@coffeycountymuseum.org)

## Brick Sales

L Bedwell 12 Eagle City OK	Gala Ackerman Chanute KS 43	Harry W Arnold & Family -2001	In Memory of Eldon Garrett
Louie & Pauline Decker	In Memory of Sylvan Bahr	Laurence N & Esther C Hess	L F Bedwell & Family -2001
Fred S Jones Gridley	Martha Mattox & Family -2001	In Memory of Alma H Bowman	Jon Hotaling CCED -2001
Cloyce E Phillips 2001	Jo Ann Phillips 2001	Albert and Opal I Kunkel	J.R. & Retha Sleezer -2001
In Memory of Ray & E A Engel	Larry G & Sallee A Hess	BHS 1962 Polly Epting	BHS 1960 J Gary Epting

## Brick Sales

Dr Dale L Reinker	Joan A. Reinker	Noah Plank & Julia Plank	In Memory of David W Allen
Edward J & Ethel Johnson	Eunice Cloyce Loren Johnson	Walker Trimble	Kennedy Trimble
In Memory of H A Dressler	In Memory of Cora Dressler	N.E. Dressler Killed WWII	In Memory of Jane K Knapp
In Memory of Roy Bates	Marj Paden 2001	In Memory of E O Anderson	In Memory of Bertie Stukey
In Memory of Ruth Stukey	John Henry Johnson	Anna Mary M. Mahr Johnson	Robert Freeman Mitchell
Caroline May Mitchell	Jackson George Margie George	Zoe Caldwell	Kaitlyn Caldwell
Isaac Caldwell	Carlita Hoover BHS 1955	Rod Hoover BHS 1974	Larry Hoover BHS 1954
Dan Salava Class of 1975	Tammy Hoover Salava BHS 76	Jon Salava Class of 1999	Nick Salava Class of 2001
Alex Salava Class of 2007	Marian Kent Race - 1866	Fannie Kent McGowan - 1867	Larry Clark Joanna Clark
Melvin (Toad) Freeman Family	Ray & Laura Belle Keys	Duane A Fitch	Fitch Family
Cloyce Edward Johnson	Elouise Alice Jones Johnson	John E Terry Jerry Johnson	Eunice Marie Johnson Neil
Loren Eugene Johnson	In Memory of Robert S Luke	Somerhalder Family	Sam J 1949 Somerhalder
Frances & M M McReynolds	Bill Knapp BHS 1944	Andrew L Hollingsworth	Caroline Hollingsworth
Albert D Hollingsworth	Lula Fern Hollingsworth	Mary Jane Hollingsworth	RM Snyder DVM 1933 - 1994

## Brick Sales

Nadine Lowman Lebo Kansas	Joe Conrad Family	Music Box 2001	The Free Family
Alice Lucille Hollingsworth	Floyd & Laura Williams	Vaughan Family	James S Peters 1853- 1943
Paul S Bohrer BHS Class 1941	In Memory of Roy T Jones	In Memory of Helen E Jones	In Memory of Butch Bahr
Clarence Kniss BHS 1951	Donna Kniss BHS 1952	Wayne & Sharon Hess	Carl W & Carol A Renfro
Cleo F Miller 1877 - 1967	Phyllis & Glenn Dorcas	Christopher "C J" Foster	Pauline Mae Stukey - 2003
Elizabeth M Hull	Sheldon L and Kelly J Hull	Charles & Fern Curtiss	In Memory of Alma Hoover
In Memory of B L Hoover	Howard Hoover 6-4-20 6-8-02	In memory of Donald D Jones	In Memory of Mary Cummings
In Memory of H Todd Hoover	Erma M. Salava	Lada E Salava	Helen L McMullen
William H McMullen	Kennamore Family	In Memory of Clyde R Traw	In Memory of James C Traw
In Memory of Nora Norris	In Memory of George Traw	Marjorie J Ivan D Smith	In Memory of Ralph W Woods
In Memory of E J Mitchell	In Memory of Jack Roush	In Memory of Marion Carter	In memory of Fred Garrett
Imo Garrett Age 100 years	James & Linda Salava	McAlister Family	Loretta White Nelson White MD
Don Fry Jr. Class of 1960	Gene John Class of 1960	Catherine & Larry Crotts	Jayden Payne
Mackenzie Payne	Mike & Janet Payne	George & Mary Theobald	United States Air Force



## Brick Sales

United States Army	United States Navy	United States Marines	Local Draft Board #13
United States Coast Guard	VFW Post 1030	All Gave Some Some Gave All	Burlington Kansas
World War I KIA	World War II KIA	Vietnam MIA	Joe Conrad Jr Class of 1970
Joe Conrad Sr Conrad Store	Herbert & Jody Hood	In Memory of Lee Alvis	Elijah Caldwell
Aiden Caldwell	Louie D Knapp BHS 1954	Mary & Thomas Markwalter	Dale & Judy Milburn
In Memory of Susan Hawley	In Memory of Larry Hoover	Randy Rogers Family	Norman & Irma Griffin
Lori & Kent Hoyt & Family	Kirkham Family	Charles & Evonne Gash	Ermadean & Merle Newkirk
George & Evamay Remy	James & Nancy Banks	In Honor of Lena Mitchell	Memory of Art & Ruth Stukey
Memory of Shirley Woods	Lee Van Tassel	Fern Davidson	Robert L. Collins
Carolyn Ables Sister & Friend	B C Weast Mom, We Miss U	R & Nita Nelson Love U Both R	Bessie Little Luv U Grandma
J L & Lula Lee Grandparents	Geo & Marla Massingill	Lee & Patty VanTassel	Clarence & Alice Malik
Brig '98 Wes '06 Miranda '01 JOY	Cosmos Club Severy KS	In Memory of Ira Hatch	In Memory of Velda Hatch
In Memory of Edna Wilson	Carlson Ed & Nancy	Spring Creek 7 Gen in Museum	Dr AB & Bess McConnell
John BHS McConnell 45	Maxine Garrett	Stanton Garrett	Dorothy L Garrett
Ivy Dorlene Hollingsworth			

Coffey County Historical Society & Museum  
1101 Neosho St.  
Burlington, KS 66839

Coffey County Historical Society & Museum

Phone: 620-364-2653  
Toll free: 1-888-877-2653  
Fax: 620-364-8933  
Email: [director@coffeycountymuseum.org](mailto:director@coffeycountymuseum.org)

**Check out all the new updates on our web site  
[www.coffeycountymuseum.org](http://www.coffeycountymuseum.org).**

